



---

14TH ANNUAL

---

**FORAGE DEVELOPED  
ANGUS BULL SALE**

---

**FEBRUARY 20TH, 2020**  
STETTLER AUCTION MART, STETTLER, AB | 2:00PM MST

---

*Selling 85 Maternally-Bred Angus Two Year Old Bulls*





# TERMS AND CONDITIONS

Chapman Cattle Company Forage-Developed 2 Year Old Angus Bulls Bull Sale 2020  
February 20, 2020 | 2PM | Stettler Auction Mart, Stettler, Alberta

## SALE DAY NUMBER

**403-742-2368**

## SALE PROFESSIONALS

Don Raffan, Auctioneer	250-558-6789
Craig Flewelling	250-558-8745
Cletus Sehn	403-634-6415
Blake Chapman	403-634-6415
Gary Rairdan	403-740-6823

## BIDS

Buyer may call or send their bids to any of the sale professionals listed above or directly to Chapman Cattle Company. Complete satisfaction is guaranteed for cattle purchased sight unseen as well as all bulls sold.

## TERMS & CONDITIONS

All cattle sell under the standard terms and conditions of the Canadian Angus Association. Terms of the sale are cash, payable on Sale Day unless prior arrangements have been made with Chapman Cattle Company.

## INSURANCE

Ownership risk to purchaser commences when the Auctioneer's hammer falls. All cattle returning to Chapman Cattle Company must be insured. Although all precautions will be made for the well-being of your cattle until possession has transferred, Chapman Cattle Company will not be liable for any sickness, injury or death that causes loss of use of the specified cattle. A Livestock Insurance agent will be available Sale Day to discuss your coverage options.

## ANNOUNCEMENTS

All announcements from the sale block on sale day take precedence over any printed material.

## FOOD

Coffee and donuts in the a.m. Lunch will be provided and served starting at 12:00 p.m. Hospitality after the sale.

## HOTELS

Canalta Hotel, Stettler	403-742-3371
Ramada Inn, Stettler	403-742-6555
Super 8 Motel, Stettler	403-742-3391
Heartlander Motel, Stettler	403-742-3401

## LIABILITY

All persons who attend the sale do so at their own risk and the owners, management, and Sale Day staff assume no liability, and disclaims all liability, legal or otherwise, for any reason.

## HEALTH

All sale bulls have been vaccinated twice with Vision 8 Somnus and Vista Once; boosted with Bovishield Gold; treated with ivermectin and Safeguard; supplemented with MultiMin 90 and Vitamin A/D, fertility tested and guaranteed sound.

## STORM DATE

**FEBRUARY 21, 2020 | 1PM | Stettler Auction Mart**  
In the event of a weather event, updates will be posted at [www.chapmancattle.com](http://www.chapmancattle.com) or call the Stettler Auction Mart 403-742-2368 or Silas Chapman 403-741-2099.

## DELIVERY

Upon Settlement, please choose one of the following options and inform the clerk at the time of settlement.

Please leave detailed delivery instructions upon doing so.

A: **\$100 Discount** per bull if bulls are picked up sale day

B: **\$50 Discount** per bull if bulls are picked up from Chapman Cattle Company within a week of the sale.

### C: Complimentary Delivery

Every attempt will be made to deliver your new bull(s) as close to your bull pen as possible for bulls selling within the prairie provinces and B.C. Any U.S. purchases will be delivered to Billings, MT. Delivery will commence early March. Chapman Cattle Company assumes no liability of death or injury for bulls returning to the ranch or in transit on a private or commercial carrier.

## SIGHT-UNSEEN PURCHASES

Can't make it to the sale? We guarantee you won't be disappointed in a Chapman "Forage-Developed" bull that you buy "sight unseen". In fact, we sell many bulls every year this way. Our experience over the past 70 years is the sooner you contact us, the better we are able to match the right cattle to your specifications. When cattle purchased sight-unseen are delivered, the buyer has the right of refusal for any animal that is not as they were represented. Guarantee applies to cattle discussed with a Chapman Sale Professional prior to the sale.

## GUARANTEE

We're confident that our 'Forage-Developed' bulls will meet and exceed your standards for longevity and performance. If for any reasons you're not satisfied with a bull you purchase from us, you don't have to pay — just call us for a prompt and courteous credit or refund. Any claims are to be made by October 1, 2020.

## FOLLOW UP & CONSULTING

We are interested about your program too, your success, and the effectiveness of our cattle in your herd. Feel free to contact us at any time.

Call us at (403) 741-2099, email us at [silas@chapmancattle.com](mailto:silas@chapmancattle.com) or through our website at [www.chapmancattle.com](http://www.chapmancattle.com).

Complete Bull Information available on-line including catalog, video, individual performance, EPD's, scrotal measurements and sale weights at [www.chapmancattle.com](http://www.chapmancattle.com)

Please let us know if we can provide you with any additional information or assistance. We look forward to seeing you on sale day!



View Sale Videos at  
[WWW.CHAPMANCATTLE.COM](http://WWW.CHAPMANCATTLE.COM)

DLMS  
[www.dlms.ca](http://www.dlms.ca)

Can't make it to the sale?  
**Bid Live Online**

## INSTRUCTIONS FOR VIEWING & BIDDING ONLINE

Visit [www.dlms.ca](http://www.dlms.ca) Fill out the registration form located under registration and sign up for your free user account to select a username and password.

**BIDDERS** – to be approved as a bidder, log in and click BUYER APPROVAL tab, select the sale you are interested in bidding at and click sign up.

For more information or for help getting approved, call Whitney Bosovich (780.991.3025) or Mark Shologan (780-699-5082)

# WELCOME

from Chapman Cattle Company

## Welcome to our 2020 bull sale and another edition of Forage-Developed 2 Year Old Angus Bulls.

Welcome to our Annual Bull Sale; and thank you for your interest and investment in the genetics we bring forward every year. Over the course of three generations and 70 years we have been developing and marketing 2-Year Old bulls exclusively. Within that time our philosophy to breeding cattle really hasn't changed: avoid any shot-gun approach to genetic selection, avoid chasing fads, and remain steadfast in maternal genetic selection.

As cattle producers, we all have access to the same genetics annually. We have focused on stacking proven genetics that are like-in-type; while allowing the environment to sort through the genetic base we have, or have accessed, in order to determine the replacements we keep and the bulls we sell. This has resulted in a multi-generational product that breed true in both genotype and phenotype.

The phenotype of our cattle has moderated over the past two decades, and this is directly attributed to the cows matching the environmental pressure we place on them. However, the percent body weight weaned per cow is now higher. If we were a commercial cow/calf outfit we would have the ability to run more cows per acre with the option to initiate a terminal crossbreeding system to increase yield. The ideal cow size and weight has been highly debated; but as a whole the smaller cow should contribute more to your gross margin.



The sale bulls were weaned off drought pasture late into 2018, and then ratioed together as one large group all the way through. No additional supplement was provided from weaning until they came off pasture in mid-November of 2019. Within the footnotes in the catalog you will notice a lot of research on the cattle "behind the bull" with the intention of providing familiarity of bloodlines and the production and longevity of the maternal dams. We recommend that before you buy a bull anywhere, familiarize yourself with their cowherd, their breeding objectives, and their long-term philosophy. There is no way around it, your cowherd inherits its genes from where the herd sires are sourced from, and that can have a profound financial impact on your program for years.

With that, the sale offering represents a cross section of proven maternal genetics. All reference sires have daughters in or coming into production this year. Our bulls breed bigger than you'd think, with bulls from past sales having sired feeders that fit in grass-based branded beef programs; sired steers excelling in grain-fed carcass trials; sired division winners from 4-H to Agribition; and sale highs for us and fellow breeders alike. Most importantly, those bulls sired maternal function, with customers returning because those Chapman-sired cows "lasted a long time".

The bull offering is uniform and consistent – quality sells throughout. We are confident in the genetic package we are selling on Thursday, February 20th and are available 365 days a year to assist you with your purchases. Thank you in advance for your interest and consideration.

*Silas Chapman*

**Silas Chapman**

phone: (403) 741-2099

silas@chapmancattle.com

www.chapmancattle.com



**Joe McLean**  
Beef Consultant  
403-393-3302

**Doug Roxburgh**  
Beef Consultant  
403-392-4541

**Kelly Resler**  
Beef Consultant  
403-506-7474

**Trevor Hamilton**  
Beef Consultant  
403-586-1114

**Tom McNeely**  
Co-Founder  
780-679-7220

**Mark Cameron**  
VP of Nutrition  
and Consulting  
403-360-1669

It is a pleasure working with a unique set of 2 year old bulls who are raised in a real ranch environment at Chapman Cattle Co. The bulls feeding program is built to maximize forage utilization and gut health.

The bulls are developed on grass with their moms and then moved onto a balanced diet that promotes lean muscle growth. Organic minerals are used to ensure proper immune

function and over all health of bulls. Bulls are slowly developed The overall nutritional health and development of the bulls and the entire cow herd is of utmost importance and is constantly being tweaked to meet environmental and seasonal conditions.

**Tom McNeely**  
Co-Founder

**Tom McNeely**  
Co-Founder

**(780) 679-7220**

tom.mcneely@bullseyefeeds.ca





# EVOLUTION OF A

**CHAPMAN**  
**MEMENTO 0505X**



**CHAPMAN**  
**MEMENTO 0509X**



**THEN**

**AND**

**NOW**



# FORAGE-DEVELOPED BULL

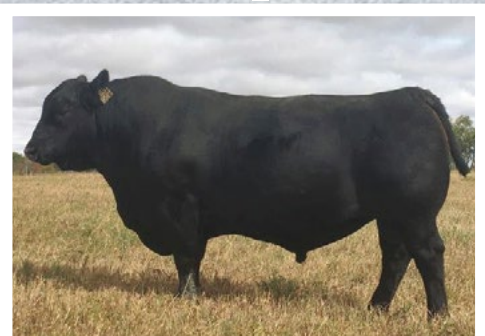
**CHAPMAN**  
**MEMENTO 0511X**



**CHAPMAN**  
**MEMENTO 0513X**



**CHAPMAN**  
**MEMENTO 3589A**





# FUNCTIONAL, MODERATE & MATERNAL ANGUS GENETICS

SIRE

**A**

**BC ROBUST 0807**



Tattoo: **IMP 0807C** DOB: December 26 2015 Reg#: **2012143**

BC EAGLE EYE 110-7  
**BC SURVEYOR 680D**  
BC 2266 PRIDES LASS 4132 680

BC PURE PRIDE 327-8  
**BC 327-8 CP BELLE 0-807**  
BC 607 CP BELLE MF 807

B C LOOKOUT 7024  
B C PURE PRIDE ERICA D 110  
B C MATRIX 4132  
CANE RIDGE PRIDES LASS 2266L

B C LOOKOUT 7024  
B C PURE PRIDE 10 825J 327  
BC CHARLIE PRIDE 304-6  
BC 901 DR BELLE MATRIX MF607

January '20 EPD's		BW	WW	YW	M	TM
		2.0	62	94	11	42
SC	CE	MCE	REA	CW	Marb	Fat
-	6.0	-6.0	0.55	23	0.07	0.020

BC Robust 0807 was the high selling bull sourced out of the 2017 Conley Angus Bull Sale. He was the lead off bull in the Champion Yearling Pen of 3 bulls at the 2017 NWSS; Reserve Senior Bull Calf Champion at the 2016 American Royal ROV Angus Show; the Reserve Champion Bull Calf at the 2016 National Junior Angus Show; and at the side of his dam as the Champion Mature Pair. He tabulates BW 78, Adj. 205 950, WR 111, YR 109 and a yearling SC of 39. He is a very balanced bull: long spined, big hipped and very photogenic in a 5 frame; but perhaps his greatest asset is how he stands down on all four corners on a good foot. In fact, Robust currently ranks in the top 1% of the breed for both foot shape and angle EPD's. His first daughters will calve this spring and they have the look of a mother cow: one reason why he bred another 70 cows naturally this summer. On his first attempt he has left some eye-catching herd bull candidates in this sale — they have the phenotype, the outcross pedigree and the proven maternal lineage we all seek.

SIRE

**B**

**CHAPMAN MEMENTO 0505X**



Tattoo: **SWC 0505X** DOB: February 26 2010 Reg#: **1571495**

SINCLAIR RITO LEGACY 3R9  
**SINCLAIR MEMENTO 8RL5**  
SINCLAIR LADY 06S3 4465

O C C JOKER 620J  
**CROWFOOT REV ERICA 5752R**  
CROWFOOT ERICA 3906N

R R RITO 707  
IDEAL 4465 OF 6807 4286  
N BAR SHADOW X4124  
IDEAL 4465 OF 6807 4286

O C C EMBLAZON 854E  
O C C JUANADA 709V  
BASIN EXPEDITION K47  
CROWFOOT FORKS 755K

January '20 EPD's		BW	WW	YW	M	TM
		0.9	30	41	25	40
SC	CE	MCE	REA	CW	Marb	Fat
-	8.0	7.0	0.17	0	0.02	0.076

0505X pedigree consists of multiple generations of top females known for fertility, udder composition, and adaptability. He bred over 400 cows naturally; obviously possessing exceptional libido and was sold as a nine year old bull as sound and robust as he was as a 2 year old. His donor dam is a true 1300 lb cow. Her udder is typical of the Joker-bred females and sets the standard for quality with small well-placed teats, and snug rear and fore udder attachment, even today as a 15 year old cow. Individually, he was 90 lb BW, WW 724, WR 107, YR 120 yet currently posts high accuracy BW and CE EPD's in the top 15% of the breed, averaging 84 lbs and 79 lbs on all male and female progeny born. 0505X isn't a terminal performance sire yet he did sire our high selling bull in both 2015 and 2016, averaging \$32,000. Memento-sired feeders have also proven to grade on a forage-only diet. This is the final year for a Memento and to quote a respected breeder who has used an 0505X son "They're such phenomenal females — can never have too many".



SIRE

C

## MC CUMBER TITANIUM 5197



Tattoo: IMP 5197C DOB: February 09 2015 Reg#:1952923

SINCLAIR FORTUNATE SON  
**MC CUMBER TITANIUM 3127**  
 MISS WIX 926 OF MC CUMBER

SITZ RAINMAKER 6536  
**MISS WIX 062 OF MC CUMBER**  
 MISS WIX 6145 OF MC CUMBER

SINCLAIR EMULATE 7XT28  
 SINCLAIR BLACKBIRD 2P8 7079  
 O C C MISSING LINK 830M  
 MISS WIX 7011 OF MC CUMBER

SITZ RAINMAKER 6169  
 SITZ ELSIEMERE 331  
 SINCLAIR EXTRA 4X13  
 MISS WIX 7111 OF MCCUMBER

January '20 EPD's		BW	WW	YW	M	TM
		2.8	48	90	22	46
SC	CE	MCE	REA	CW	Marb	Fat
-	2.0	3.0	0.63	34	-0.31	0.015

Breeding cattle isn't about trying to hit a home run with one bull that promises all, but by breeding like to like phenotypes and splicing in the genotypes that compliment. 5197 fits that description — moderate made but full of muscle, thickness, volume and mass. He weaned off his Pathfinder dam with an actual weaning weight of 815 lbs. for a 205 day weight of 770 lbs. for a ratio of 108. He gained over 4 lbs/day and has a 365 day weight of 1431 lbs. for a ratio of 108. He has a REA of 16.0sq. in. for a ratio of 114; and confirms the visual muscle he displays. As evident by his Heifer Pregnancy EPD in the top % of the breed, 5197 stems from multiple generations of Miss Wix females with maternal merit, longevity, and productivity in a forage environment. Utilize his sons as "cowmakers" as his daughters have the look of efficient brood cows.

SIRE

D

## CHAPMAN RITO 4523B



SIRE - SINCLAIR RITO 9R7

Tattoo: SWC 4523B DOB: April 10 2014 Reg#:1830918

RITO REVOLVE 0R5  
**SINCLAIR RITO 9R7**  
 SINCLAIR K BTY 6PV5 25F3

CHAPMAN LEGACY 026S  
**CHAPMAN CHLOE 125Y**  
 CHAPMAN CHLOE 814U

R R RITO 707  
 IDEAL 1456 OF 8103 8114  
 SINCLAIR NET PRESENT VALUE  
 SINCLAIR K BTY 25F3 Z189

O C C LEGACY 839L  
 PAT LADY ERICA 8984  
 SINCLAIR EXTRA 4X13  
 CHAPMAN CHLOE 204M

January '20 EPD's		BW	WW	YW	M	TM
		1.8	50	78	13	38
SC	CE	MCE	REA	CW	Marb	Fat
-	6.0	7.0	-	-	-	-

4523B sold through our sale as a feature calving ease sire to Byemoor Colony in 2016. We repurchased him back where he went onto cows for continuity of the growth and muscle that his sire propagated. The 4523 sons are thick made cow bulls and all out of dams that have an average nursing ratio of 102, and all are above 100. 4523 has averaged 83 lbs and 79 lbs on all male and female progeny respectively. His sire, 9R7, is a high accuracy EPD sire who ranks in the top 1% of the breed for weaning weight, as well as both foot EPD's (shape and angle). These forage-developed Rito's really look the part when they get to be aged herd sires.



# FUNCTIONAL, MODERATE & MATERNAL ANGUS GENETICS

SIRE

E

**XO CROWFOOT EQU 268Z**



Tattoo: **XO 268Z** DOB: February 19 2012 Reg#: **1689402**

O C C LEGACY 839L  
**CROWFOOT EQUATION 5793R**  
CROWFOOT FORKS 755K

O C C ECHELON 857E  
O C C DIXIE ERICA 960E  
TOMWALL PIED PIPER 413  
GLADWALL B REV ERICA 7289

CROWFOOT 6071S  
**XO CROWFOOT DIXIE ERICA 828U**  
CROWFOOT DIXIE ERICA 6422S

O C C ECHELON 857E  
CROWFOOT G EILEEN 9156  
SITZ ALLIANCE 9160  
CROWFOOT DIXIE ERICA 1626L

January '20 EPD's		BW	WW	YW	M	TM
		-0.6	37	67	28	47
SC	CE	MCE	REA	CW	Marb	Fat
-	10.0	6.0	0.20	18	0.26	0.020

"268" was acquired from Crowfoot Cattle as their high selling Angus bull in 2013. He is a bull that has worked his way up the ladder, initially being used in a multi-sire pasture, to a few consecutive years as a heifer bull, and then on to mature cows. He sires a big middle in his progeny and they are easy keepers. At the age of 9, he is still very sound and stands down on all four corners with a big hoof. His individual performance was also near the top of a large contemporary group of 195 head, posting weaning and yearling ratios of 112 and 119 respectively with an IMF ratio of 108. He ranks in the top 7% of the breed for BW and CE EPD's yet will most likely have sired the heaviest bull in this sale in Lot 1. His dam and maternal grand dam are both Elite dams with the Association. Utilize his sons to improve feet, add capacity, and for their calving ease; as well as the maternal influence that combines elite cows with an OCC Legacy 839L downline.

SIRE

F

**CHAPMAN EQUATION 4547B**



SIRE - CROWFOOT EQUATION 5793R

Tattoo: **SWC 4547B** DOB: April 18 2014 Reg#: **1830809**

O C C LEGACY 839L  
**CROWFOOT EQUATION 5793R**  
CROWFOOT FORKS 755K

O C C ECHELON 857E  
O C C DIXIE ERICA 960E  
TOMWALL PIED PIPER 413  
GLADWALL B REV ERICA 7289

O C C MOONSHINE 740M  
**CROWFOOT REV ROSE 5900R**  
CROWFOOT CH REV ROSE 1627L

O C C JUST RIGHT 619J  
O C C DIXIE ERICA 816B  
C&D 455 ROCKETT  
C H REV ROSE 9297

January '20 EPD's		BW	WW	YW	M	TM
		0.5	30	56	30	45
SC	CE	MCE	REA	CW	Marb	Fat
-	6.0	3.0	0.16	11	0.26	0.009

We retained five home-raised bulls out of the 2014 calf crop. Those five were all out of what we considered paternally prepotent dams that were proven and donor worthy. 4547B was one of those five and out of the same dam as Chapman Memento 0511X. She posted a WR of 12/103. Interesting that 4547 is a naturally sired son of Crowfoot Equation 5793R who ran here with 50 cows as a nine year old bull. The first Crowfoot Equation daughters are now entering their 13th year and easily make an argument to going back to using the old bull, or his downline. 4547B looks a lot like his sire did, as well as his paternal brother, XO Crowfoot 268Z. 4547 has been used on cows and heifers. Utilize his sons for their predictable maternal merit full of great udders, great feet and longevity.



SIRE

G

## RICHMOND BANDIT SRD 67B



Tattoo: SRD 67B DOB: February 11 2014 Reg#:1777593

COLE CREEK GOLDMERE 70V  
**COLE CREEK GOLDMERE 581**  
 COLE CREEK JUANADA 92T

CROWFOOT EQUATION 5793R  
**CROWFOOT KELTON 2015Z**  
 CROWFOOT PATTI 7043T

COLE CREEK GOLDMERE 31N  
 COLE CREEK CLOVA JUANADA 16N  
 COLE CREEK GOLDMERE 31N  
 COLE CREEK JUANADA 32P

O C C LEGACY 839L  
 CROWFOOT FORKS 755K  
 O C C MOONSHINE 740M  
 Z O E KELTON 9978

January '20 EPD's		BW	WW	YW	M	TM
		4.3	49	77	27	52
SC	CE	MCE	REA	CW	Marb	Fat
-	-2.0	6.0	-	-	-	-

In 2014 we partnered with Crowfoot Cattle on four of the top bulls from Cole Creek Angus in Montana. Bandit's dam, an Equation daughter, was the high selling bred heifer out of that same dispersal. Knowing the cow, the sire and the lineage behind him, Bandit was purchased as the high selling bull out of Richmond's inaugural Angus offering. Excellent performance as a calf, his progeny are extra docile possessing a big scrotal with very sound feet and a lot of middle. His daughters also exhibit extra pelvic width. He ranks in the top 15% and 10% for Milk and Total Maternal EPD's respectively, yet that added maternal capacity does not draw them down in condition in the fall. Similar to our old Joker line that was popular for years, there is a lot of traditional Angus character in this line and his progeny offer a lot of economical traits inherent to profitability.

SIRE

H

## CHAPMAN COALITION 4557B



SIRE - SITZ ALLIANCE 6595

Tattoo: SWC 4557B DOB: April 17 2014 Reg#:1892847

SITZ TRAVELER 8180  
**SITZ ALLIANCE 6595**  
 SITZ BARBARAMERE JET 2698

O C C JOKER 620J  
**CROWFOOT LADY ERICA 3785N**  
 PAT LADY ERICA 8984

G D A R TRAVELER 71  
 SITZ EVERELDA ENTENSE 1137  
 3 BAR SPIKE 1766  
 SITZ BARAMERE JET 155

O C C EMBLAZON 854E  
 O C C JUANADA 709V  
 N BAR IMPACT U1253  
 PAT PIED PIPER 921

January '20 EPD's		BW	WW	YW	M	TM
		3.5	51	81	27	53
SC	CE	MCE	REA	CW	Marb	Fat
-	0.0	7.0	0.08	12	0.26	0.046

Coalition is one of the best kept secrets here and has created a proof of production the old school way; having ran in multi-sire groups his first two years where nature has the final say. A product of our in-house embryo program, Coalition has a herd bull look and possesses as good a foot shape as I've seen on a 6 year old bull. He looks a lot like his Pathfinder sire, Sitz Alliance 6595 at that age and carries the maternal legacy of the Lady Erica cow family where his dam served as an in-house donor, as well as his donor granddam who produced until 18 years of age. Utilize his sons for their maternal genetic merit.



# FUNCTIONAL, MODERATE & MATERNAL ANGUS GENETICS

SIRE

I

**S A V RESOURCE 1441**



Tattoo: **IMP 1441Y** DOB: January 07 2011 Reg#: **1707295**

R R RITO 707  
**RITO 707 OF IDEAL 3407 7075**  
IDEAL 3407 OF 1418 076

S A V 8180 TRAVELER 004  
**S A V BLACKCAP MAY 4136 CAF**  
S A V MAY 2397 CAF

RITO N BAR  
ERISKAY OF ROLLIN ROCK 3  
IDEAL 1418 OF 8103 4286  
IDEAL 076 OF 692 8375

SITZ TRAVELER 8180  
BOYD FOREVER LADY 8003  
S A F 598 BANDO 5175  
S A V MAY 7238

January '20 EPD's		BW	WW	YW	M	TM
		4.0	70	133	19	54
SC	CE	MCE	REA	CW	Marb	Fat
-	1.0	-1.0	1.12	58	-0.04	0.003

Among the breed's top registration sires, Resource is well known for siring body dimension, fleshing ease, muscle thickness and breed character. He consistently sires high quality functional phenotype and unprecedented productivity. A lot of the sires we have used over the past 15 years wrap up a similar paternal lineage as Resource, tracing back to RR Rito 707. Resource is a bull I've liked every time I have seen him, and his sons will be easily identifiable on sale day.

SIRE

J

**S A V SENSATION 5615**



Tattoo: **IMP 5615C** DOB: January 06 2015 Reg#: **1943126**

RITO 707 OF IDEAL 3407 7075  
**S A V REGISTRY 2831**  
S A V MADAME PRIDE 0075

S A V 8180 TRAVELER 004  
**S A V BLACKCAP MAY 4136 CAF**  
S A V MAY 2397 CAF

R R RITO 707  
IDEAL 3407 OF 1418 076  
S A F 598 BANDO 5175  
S A V MADAME PRIDE 8264

SITZ TRAVELER 8180  
BOYD FOREVER LADY 8003  
S A F 598 BANDO 5175  
S A V MAY 7238

January '20 EPD's		BW	WW	YW	M	TM
		2.0	57	107	19	48
SC	CE	MCE	REA	CW	Marb	Fat
-	4.0	1.0	0.64	46	0.05	-0.014

SAV Sensation was the high-selling lot of the 2016 Schaff Angus Valley Sale. Note that his mother, SAV Blackcap May 4136, is the No.1 income producing cow in SAV history, is also the mother to SAV Resource 1441. These Sensation calves came into the world small, and it took a while for them to get going, but then they didn't look back. Phenotypically they are clean fronted and long-bodied. Utilize Sensation sons as a fresh pedigree that features a real birth to weaning spread for cows and heifers. Plus the heifer mates to these sons look very sharp.



## SIRE



# WRA CEDAR RUN D2



Tattoo: **IMP 020D** DOB: February 06 2016 Reg#: **2012142**

COLE CREEK CEDAR RIDGE 1V  
**W R A CEDAR RUN A7**  
W R A EILEEN BAR 115P

W R A ARISTOCRAT R4  
**W R A SARAH 237W**  
W R A SARAH 237G

COLE CREEK BLACK CEDAR 46P  
COLE CREEK CLOVANADA 49S  
CAR DUKE 104  
W R A EILEEN BAR 115M

W R A ARISTOCRAT M1  
W R A ROYAL LADY 392J  
BASIN RAINMAKER 654X  
W R A SARAH 37C

January '20 EPD's		BW	WW	YW	M	TM
		0.2	22	53	32	43
SC	CE	MCE	REA	CW	Marb	Fat
-	6.0	7.0	0.11	16	0.24	0.020

D2 was acquired as the high selling bull in the 2017 Headquarters for Hindquarters sale in Virginia. He personifies balanced trait production because he is not extreme in any trait. He is a moderate framed, long bodied, big volume individual that has excellent base width, a big foot and lots of scrotal. His dam boasts a flawless phenotype and she flourishes in a fescue-based forage environment. The daughters of D2 should be good, and his sons should be versatile in their application on cows or heifers plus a fresh pedigree for many.

## BREED AVERAGES

Black Angus Breed Averages are compiled from the total number of Black Angus calves registered in 2018 to compare the BLACK ANGUS BULLS in this catalogue to:

	BLACK ANGUS
BW	<b>+2.0</b>
WW	<b>+47</b>
YW	<b>+79</b>
Milk	<b>+21</b>
TM	<b>+44</b>

## EPD EXPLANATION

EPD's are predictions on how each bull rates against his own contemporary group and the rest of the breed. EPD's evaluate group averages and offspring's performance, however they cannot predict individual performance or weights.

For example, if Bull A (WW EPD of +10) & Bull B (WW of +60) were randomly mated with 10 similar cows, we would expect the group avg. weaning weight of Bull A's offspring to be 50 lbs. lighter than Bull B's (60 - 10 = 50).

BW	Birth Weight - expressed in pounds, is a prediction of a sire's ability to transmit birth weight to his progeny.
WW	Weaning Weight - expressed in pounds, is a predictor of a sire's ability to transmit weaning growth to his progeny.
YW	Yearling Weight - expressed in pounds, is a predictor of a sire's ability to transmit yearling growth to his progeny.
Milk	A predictor of a sire's genetic merit for milk and mothering ability as expressed in his daughters.
TM	Total Maternal - 1/2 Weaning Weight + Milk. This index is the expected amount of pounds that a sire's daughters' calves will differ from the breed average assuming the daughters are mated to sires of average genetic merit for Weaning Weight.
CE	Calving Ease Direct (CE), is expressed as a difference in percentage of unassisted births, with a higher value indicating greater calving ease in first-calf heifers. It predicts the average difference in ease with which a sire's calves will be born when he is bred to first-calf heifers.
MCE	Maternal Calving Ease (MCE) is expressed as a difference in percentage of unassisted births with a higher value indicating greater calving ease in first-calf daughters. It predicts the average ease with which a sire's daughters will calve as first-calf heifers when compared to daughters of other sires.





LOT

1

## CHAPMAN EQUATE 8512

TAT00 SWC 8512F DOB: APRIL 16 2018 REG#: 2129013

## SPRING '20

BW 1.9  
WW 44  
YW 71  
M 21  
TM 43  
CE 4.5  
MCE 4

CROWFOOT EQUATION 5793R  
**XO CROWFOOT EQU 268Z**  
XO CROWFOOT DIXIE ERICA 828U

SINCLAIR RITO 9R7  
**CHAPMAN BLACKBIRD 4111B**  
CHAPMAN BLACKBIRD 138Y

O C C LEGACY 839L  
CROWFOOT FORKS 755K  
CROWFOOT 6071S  
CROWFOOT DIXIE ERICA 6422S

RITO REVOLVE 0R5  
SINCLAIR K BTY 6PV5 25F3  
CHAPMAN LEGACY 026S  
CHAPMAN BLACKBIRD 820U

## DAM'S PROD

BW	WW	WR	YW	YR	SC	AOD	NR
87	671	109	1055	109	43	4	106

**Herd Bull Candidate.** Big topped, loose hidied, wide based and bold sprung describes Lot 1 who will enter the ring as one of the heaviest, if not the heaviest bulls in the sale. His dam has quietly composed a strong production record while being early in gestation, posting a 353 day CI. She is an ideal size for any profit-oriented outfit. She annually weans off a high percentage of her own weight and did it again in 2019 by bringing in a top Titanium heifer calf. Her sire, 9R7, was a go-to performance sire for years and ranks in the top 1% across the breed for WW EPD's, as well as both foot score EPD's. It is no surprise that Lot 01 has risen to the top as the old Lady Erica 8984 donor also shows up in the pedigree. His sire, 268Z, is still here and at the age of 8 and moves out fluidly on a big foot. Plus, 268Z is backed by 2 dams designated Elite status by the Association. Not a lot of guesswork here - Lot 01 is double bred OCC Legacy 839L and is a neat combination of old school Rito growth and muscle with a series of highly proven sires known for maternal excellence.





LOT

2

# CHAPMAN RECURSE 8613

TATOO SWC 8613F DOB: May 03 2018 REG#: 2127510

## SPRING '20

BW	2.6
WW	55
YW	102
M	21
TM	49
CE	5
MCE	3

RITO 707 OF IDEAL 3407 7075  
**S A V RESOURCE 1441**  
 S A V BLACKCAP MAY 4136

CROWFOOT EQUATION 5793R  
**CHAPMAN ROSE 926W**  
 CHAPMAN ROSE 429P

R R RITO 707  
 IDEAL 3407 OF 1418 076  
 S A V 8180 TRAVELER 004  
 S A V MAY 2397

O C C LEGACY 839L  
 CROWFOOT FORKS 755K  
 O C C GLORY 950G  
 GLADWALL ROSE OF L 6310

## DAM'S PROD

BW	WW	WR	YW	YR	SC	AOD	NR
86	658	113	1064	113	40	9	111

**Herd Bull Candidate.** Lot 02 comes with a modest 86 lb birth weight considering both sire and dam will add that extra power to their downline. He has the look of a herd bull while being wide topped, expansive in design and gets things done numerically. His dam hasn't missed having earned progeny weaning and yearling ratios of 7/111 and 7/111 respectively. Her progeny ratios being identical is no misprint, and coincidentally Lot 02 has identical individual ratios of 113. His dam has already put 3 sons through previous sales to Bluesky, Rowbottom and Johnson. She calved 1st cycle again in 2019 and is bred back early for a 2020 calf by Chapman Coalition 4557B. In our program, bulls that rise to the top do it the hard way. Instead of giving a bull every excuse to succeed, we give them every reason to fail. Lot 02 rose to the top. There are many direct Resource sons out there already - few out of OCC-bred dams.







LOT

3

## CHAPMAN ROBUST 8568

TATOO SWC 8568F DOB: April 23 2018 REG#: 2127484

## SPRING '20

BW	2.4
WW	55
YW	84
M	17
TM	45
CE	4
MCE	-1

BC SURVEYOR 680D  
**BC ROBUST 0807**  
 BC 327-8 CP BELLE 0-807

MC CUMBER 8R101 RITO 161  
**CHAPMAN BELLE NELLIE 3054A**  
 CROWFOOT BELLE NELLIE 4716P

BC EAGLE EYE 110-7  
 BC 2266 PRIDES LASS 4132 680  
 BC PURE PRIDE 327-8  
 BC 607 CP BELLE MF 807

SINCLAIR ENTREPRENEUR 8R101  
 B PRIDE 463 OF MC CUMBER  
 O C C LEGACY 839L  
 CROWFOOT BELLE L NELLIE 2646M

## DAM'S PROD

BW	WW	WR	YW	YR	SC	AOD	NR
90	722	118	1070	110	42	5	101

**Herd Bull Candidate.** Some bulls rise to the top at weaning, some at yearling, and some sale day. I always have an appreciation for the ones that catch your eye at every stage, and Lot 03 has done that since a month of age. When the 1st Robust calves hit the ground in 2018, they were jet black, stout and had a sharp look. Reassuring to say the least when you buy the sire out of Missouri sight unseen for \$30,000 CDN. Robust has bred well here as he has back at Conley's and offers a unique pedigree to almost everything. Lot 03 is clean in his lines, well-endowed, and really stands down on good feet. He has jumped each hurdle from birth to sale day and his dam is a personal favorite from her age group. She is a moderate frame cow that has the look and productivity that we all strive for. Coincidentally she is bred back to Robust. She maintains a 364 day calving interval and my preference in 2020 would be a Robust heifer calf. On the maternal side, Lot 03 is backed by two immediate Pathfinder donors: the B Pride 463 of McCumber 463 cow and the N Bar Kinochtry Beauty Z1925 cow.





LOT

4

## CHAPMAN ROBUST 8582

TAT00 SWC 8582F DOB: April 27 2018 REG#: 2127495

## SPRING '20

BW	3.7
WW	51
YW	87
M	18
TM	44
CE	1
MCE	-3

BC SURVEYOR 680D  
**BC ROBUST 0807**  
 BC 327-8 CP BELLE 0-807

CHAPMAN MEMENTO 0505X  
**CHAPMAN DUCHESS 3076A**  
 CHAPMAN DUCHESS 8009U

BC EAGLE EYE 110-7  
 BC 2266 PRIDES LASS 4132 680  
 BC PURE PRIDE 327-8  
 BC 607 CP BELLE MF 807

SINCLAIR MEMENTO 8RL5  
 CROWFOOT REV ERICA 5752R  
 O C C MOONSHINE 740M  
 CHAPMAN DUCHESS 4403

## DAM'S PROD

BW	WW	WR	YW	YR	SC	AOD	NR
95	648	106	1082	111	37	5	100

**Herd Bull Candidate.** Cut from the same cloth as Lot 03, here is another bull that picks up what Robust is throwing down. Lot 04 blends phenotype with a strong individual tabulation. These lead off bulls were treated no different from the rest — no separate pens, no individual feed tubs but rather rising to the top in groups of 100+ bulls all the way through and measured against the whole group in a low input system. His sire, Robust, is backed by generations of Conley breeding and laces together the highly proven Pride and Belle cow families while doubling up on notable sires such as BC Lookout and BC Matrix. Dig back a little further into the pedigree of Robust and some familiar OCC-bred sires show up top and bottom, as does N Bar Emulation EXT. This compliments the dam of Lot 04 who also lines up OCC Moonshine and OCC Joker in her pedigree — both who had a real impact for us early on. Note the 1st three maternal granddams behind Lot 04 have a combined progeny weaning ratio 8/105. Memento's dam, 5752R, will calve again in 2020 as a 15 year old cow and has earned a production record of 10/103 with the interruption in her record due to full time donor status. She has produced two former bull sale high \$ bulls to Crowfoot and Ole Farms as well as sale features to Cowie Cattle and Tomahawk Ranches.





GRP

LOT

5

## CHAPMAN GOLDMERE 8585

TAT00 SWC 8585F DOB: April 29 2018 REG#: 2127490

## SPRING '20

BW 4.7  
WW 67  
YW 108  
M 23  
TM 57  
CE -3  
MCE 3

COLE CREEK GOLDMERE 581  
**RICHMOND BANDIT SRD 67B**  
CROWFOOT KELTON 2015Z

SINCLAIR RITO 9R7  
**CHAPMAN ROSE 5056C**  
CHAPMAN ROSE 8057U

COLE CREEK GOLDMERE 70V  
COLE CREEK JUANADA 92T  
CROWFOOT EQUATION 5793R  
CROWFOOT PATTI 7043T

RITO REVOLVE 0R5  
SINCLAIR K BTY 6PV5 25F3  
DDA EMBLAZON 27C  
CHAPMAN ROSE 4405

## DAM'S PROD

BW	WW	WR	YW	YR	SC	AOD	NR
93	717	117	1137	117	40	3	110

**Herd Bull Candidate.** Cowboys take notice as this is your type. Big and rugged, Lot 05 will mature into an impressive beef bull. His paternal brothers to sell in previous years have been favorites, with 4 of the 8 bulls to sell over \$10,000 last year were Bandit-sired. It is possible that he should be a few spots up in the order; but the good ones always get marked no matter where they are in the catalog. He really stands down on all four corners, is expansive in his rib, docile, well-endowed and possesses a traditional Angus look that could thrive in the harshest of environments. He will challenge Lot 01 as the heaviest bull sale day and has been in the top echelon for performance all along in a boot camp of bull development. His dam is setting herself up too as the profitable type, having already earned an impressive production record and a calving interval of 384 which will average down as she weaned a replacement born early in the 1st cycle in 2019 and rebred early again to McCumber Titanium 5197. Note the maternal granddam, 8057U, is designated an Elite Dam with the Association, having earned a progeny WR 9/108. Consider Lot 05 as a source of grass-based genetics that blends efficiency with added pay weight.





LOT	6	CHAPMAN EQUATE 8551					
		TATOO SWC 8551F DOB: APRIL 25 2018 REG#: 2129032					
SPRING '20		CROWFOOT EQUATION 5793R <b>XO CROWFOOT EQU 268Z</b> XO CROWFOOT DIXIE ERICA 828U	O C C LEGACY 839L CROWFOOT FORKS 755K CROWFOOT 6071S CROWFOOT DIXIE ERICA 6422S				
BW	1.2						
WW	31						
YW	53						
M	25						
TM	41						
CE	6.5						
MCE	7.0						
		CROWFOOT JOKER 6172S <b>CHAPMAN KAWICH LADY 4002B</b> XO CROWFOOT KAWICH LADY 957W	O C C JOKER 620J CFCC 1801L CROWFOOT 6071S CROWFOOT VALLEY CJ ERICA 7723T				
DAM'S PROD							
BW	WW	WR	YW	YR	SC	AOD	NR
80	660	108	1008	104	37	4	100

**Calving ease prospect.** Lot 06 doesn't give much up in terms of performance to the first 5 bulls as indicated by individual ratios that are well above average for performance. His Crowfoot pedigree consists of several Elite Dams as designated within the Association. His dam is right in the mix for production while carrying a 374 day calving interval and stems from a cow family full of great udders.



LOT	7	CHAPMAN TITANIUM 8544					
		TATOO SWC 8544F DOB: April 24 2018 REG#: 2127550					
SPRING '20		MC CUMBER TITANIUM 3127 <b>MC CUMBER TITANIUM 5197</b> MISS WIX 062 OF MC CUMBER			SINCLAIR FORTUNATE SON MSS WIX 926 OF MC CUMBER SITZ RAINMAKER 6536 MISS WIX 6145 OF MC CUMBER		
BW	3.8						
WW	45						
YW	86						
M	21	CROWFOOT MACHO 4549P			O C C MAGNUM 749M		
TM	44	<b>CHAPMAN PRINCENE 8024U</b>			CROWFOOT BLACKBIRD 2537M		
CE	2.0	CHAPMAN PRINCENE 616S			CROWFOOT VENTURE 1698L		
MCE	5.0				CHAPMAN PRINCENE 422P		
		DAM'S PROD					
BW	WW	WR	YW	YR	SC	AOD	NR
93	628	102	1048	108	40	10	106

This is 8024's 4th bull to be sale-qualified with several top end replacements kept as well. The Crowfoot Macho daughters have all been very productive and she is one of the best; weaning off another top heifer calf in 2019. Based on her type and earned production record, she is definitely donor qualified.



LOT	8	CHAPMAN CITATION 8614					
		TATOO SWC 8614F DOB: May 03 2018 REG#: 2127521					
SPRING '20		S A V REGISTRY 2831			RITO 707 OF IDEAL 3407 7075		
BW 1.3		SA V SENSATION 5615			S A V MADAME PRIDE 0075		
WW 41		S A V BLACKCAP MAY 4136			S A V 8180 TRAVELER 004		
YW 75					S A V MAY 2397		
M 22		CROWFOOT EQUATION 5793R			O C C LEGACY 839L		
TM 43		CHAPMAN CHLOE 946W			CROWFOOT FORKS 755K		
CE 6.0		CHAPMAN CHLOE 204M			LEACHMAN RIGHT TIME		
MCE 4.0					GLADWALL B CHLOE 1161		
		DAM'S PROD					
BW	WW	WR	YW	YR	SC	AOD	NR
82	628	102	1003	103	42	9	101

**Calving ease prospect** with an elite maternal pedigree. With just a modest birth weight of 82 lbs Lot 8 has been above average in every category ever since in a large and competitive group of bulls. The Sensation bred heifers here really look the part. Dam holds a 369 day calving interval.





**LOT**  
**9**

**CHAPMAN MEMENTO 8701**  
TATOO SWC 8701F DOB: May 06 2018 REG#: 2127481

<b>SPRING '20</b> BW 1.0 WW 49 YW 69 M 24 TM 49 CE 5.0 MCE 5.0	SINCLAIR MEMENTO 8RL5 <b>CHAPMAN MEMENTO 0505X</b> CROWFOOT REV ERICA 5752R  MC CUMBER 536P EXT 7196 <b>CHAPMAN LURA 2019Z</b> CHAPMAN LURA 9073W	SINCLAIR RITO LEGACY 3R9 SINCLAIR LADY 06S3 4465 O C C JOKER 620J CROWFOOT ERICA 3906N  SITZ JLS EMULATION EXT 536P LASSIE 434 OF MC CUMBER CROWFOOT EQUATION 5793R CHAPMAN LURA 446P
---	---	---

DAM'S PROD						
BW	WW	WR	YW	YR	SC	NR
85	711	116	1027	106	41	103

Modest birth weight individual out of an EXT-bred dam who weaned off his dam on 2018 drought pasture as one of the heavier bulls. Typical of the 7196 daughters, they are long bodied with a neat, well-attached udders and always catch early as indicated by her calving interval of 370.



**LOT**  
**10**

**CHAPMAN TITANIUM 8606**  
TATOO SWC 8606F DOB: May 01 2018 REG#: 2127499

<b>SPRING '20</b> BW 3.2 WW 48 YW 81 M 25 TM 49 CE 0.0 MCE 1.0	MC CUMBER TITANIUM 3127 <b>MC CUMBER TITANIUM 5197</b> MISS WIX 062 OF MC CUMBER  CROWFOOT EQUATION 5793R <b>CHAPMAN CHLOE 8054U</b> CHAPMAN CHLOE 205M	SINCLAIR FORTUNATE SON MSS WIX 926 OF MC CUMBER SITZ RAINMAKER 6536 MISS WIX 6145 OF MC CUMBER  O C C LEGACY 839L CROWFOOT FORKS 755K LEACHMAN RIGHT TIME GLADWALL B CHLOE 623
---	---	--

DAM'S PROD						
BW	WW	WR	YW	YR	SC	NR
95	733	119	1040	107	38	110

Here is one of the better bulls in the pen exhibiting the base width and shape of his sire. The Chloe cow family has been a benchmark for udders, fertility and longevity. Just look at the production record Lot 10's dam has earned within a 368-day calving interval. His maternal brother commanded a \$44,000 valuation in last years' sale to McCumber Angus in North Dakota.



**LOT**  
**11**

**CHAPMAN COALITION 8561**  
TATOO SWC 8561F DOB: April 26 2018 REG#: 2127459

<b>SPRING '20</b> BW 3.6 WW 45 YW 67 M 23 TM 46 CE 0.0 MCE 6.0	SITZ ALLIANCE 6595 <b>CHAPMAN COALITION 4557B</b> CROWFOOT LADY ERICA 3785N  CHAPMAN LEGACY 026S <b>CHAPMAN ROSE 129Y</b> CHAPMAN ROSE 45P	SITZ TRAVELER 8180 SITZ BARBARAMERE JET 2698 O C C JOKER 620J PAT LADY ERICA 8984  O C C LEGACY 839L PAT LADY ERICA 8984 CROWFOOT BRUNO 1670L GLADWALL ROSE OF L 1173
---	--	---

DAM'S PROD						
BW	WW	WR	YW	YR	SC	NR
95	680	111	978	101	39	102

There is a lot of maternal integrity in Lot 11's pedigree. His pedigree tabulates the Pathfinder Sire Sitz Alliance 6595 with a double shot of our old Lady Erica 8984 donor who was highly productive to the age of 18. Lot 11's dam is a smaller cow who weans a high % of her weight while maintaining a 365 day CI.

PAT B LADY ERICA 8984 - PATERNAL GRANDDAM OF LOT 11





CROWFOOT BRUNO 1670L - MATERNAL GRANDSIRE OF LOT 12

## LOT 12 CHAPMAN EQUATE 8538

TAT00 SWC 8538F DOB: APRIL 20 2018 REG#: 2129109

## SPRING '20

BW	0.9
WW	38
YW	63
M	27
TM	46
CE	6.5
MCE	7.0

CROWFOOT EQUATION 5793R  
**CHAPMAN EQUATION 4547B**  
 CROWFOOT REV ROSE 5900R

CROWFOOT JOKER 6172S  
**CHAPMAN DUCHESS 4170B**  
 CHAPMAN DUCHESS 4403

O C C LEGACY 839L  
 CROWFOOT FORKS 755K  
 O C C MOONSHINE 740M  
 CROWFOOT CH REV ROSE 1627L  
 O C C JOKER 620J  
 CFCC 1801L  
 CROWFOOT BRUNO 1670L  
 RED CHAPMAN DUCHESS 103L

## DAM'S PROD

BW	WW	WR	YW	YR	SC	AOD	NR
92	638	104	995	102	38	4	97

The Crowfoot herd was popular for propagating and efficient body type with responsible frame and a unique pedigree. Lot 12 combines 3 high selling bulls from their herd, including Crowfoot Joker, Crowfoot Bruno and Crowfoot Equation. Dam posts a 366 day CI. Maternal granddam WR 12/103.



CROWFOOT JOKER 6172S - MATERNAL GRAND SIRE OF LOT 13

## LOT 13 CHAPMAN RITO 8510

TAT00 SWC 8510F DOB: April 15 2018 REG#: 2127474

## SPRING '20

BW	3.6
WW	53
YW	90
M	18
TM	45
CE	0.0
MCE	5.0

SINCLAIR RITO 9R7  
**CHAPMAN RITO 4523B**  
 CHAPMAN CHLOE 125Y

CROWFOOT JOKER 6172S  
**CHAPMAN HANNI 1010Y**  
 CHAPMAN HANNI 4401

RITO REVOLVE 0R5  
 SINCLAIR K BTY 6PV5 25F3  
 CHAPMAN LEGACY 026S  
 CHAPMAN CHLOE 814U

O C C JOKER 620J  
 CFCC 1801L  
 CROWFOOT BRUNO 1670L  
 RED CHAPMAN HANNI 002K

## DAM'S PROD

BW	WW	WR	YW	YR	SC	AOD	NR
93	684	111	1122	116	40	7	102

Consistent individual performance numbers on this thick Rito grandson. Lot 13's dam is a big bodied Joker daughter who maintains a 366 day CI. Her dam produced to the age of 15. Both Joker and Bruno sired a lot of internal capacity, as did Sinclair Rito, who is in the top 1% of the breed for WW and foot shape EPD's.



## LOT 14 CHAPMAN ROBUST 8699

TAT00 SWC 8699F DOB: May 05 2018 REG#: 2127509

## SPRING '20

BW	1.5
WW	50
YW	72
M	19
TM	44
CE	4.0
MCE	1.0

BC SURVEYOR 680D  
**BC ROBUST 0807**  
 BC 327-8 CP BELLE 0-807

CHAPMAN EQUATION 8541U  
**CHAPMAN KIWI 3088A**  
 CHAPMAN KIWI 634S

BC EAGLE EYE 110-7  
 BC 2266 PRIDES LASS 4132 680  
 BC PURE PRIDE 327-8  
 BC 607 CP BELLE MF 807

CROWFOOT EQUATION 5793R  
 CHAPMAN NELLIE 210M  
 PINEBANK WAIGROUP 41/97  
 BARBWALL P ROSE LEE 5140

## DAM'S PROD

BW	WW	WR	YW	YR	SC	AOD	NR
81	690	112	993	102	41	5	100

Calving ease candidate by the numbers and by phenotype with a fresh pedigree for most. Lot 14 has a nice birth to weaning spread. Robust ranks in the top 1% of the breed for both foot score EPD's. Maternal granddam weaned a top bull calf this past fall and has earned a WR 11/101 while the great MGD earned a WR 13/103.





## LOT 15 CHAPMAN GOLDMERE 8552

TAT00 SWC 8552F DOB: April 25 2018 REG#: 2127514

### SPRING '20

BW	3.9
WW	55
YW	90
M	26
TM	54
CE	-1.0
MCE	4.0

COLE CREEK GOLDMERE 581  
**RICHMOND BANDIT SRD 67B**  
CROWFOOT KELTON 2015Z

MC CUMBER 8R101 RITO 161  
**CHAPMAN ROSE 5075C**  
CHAPMAN ROSE 103Y

COLE CREEK GOLDMERE 70V  
COLE CREEK JUANADA 92T  
CROWFOOT EQUATION 5793R  
CROWFOOT PATTI 7043T

SINCLAIR ENTREPRENEUR 8R101  
B PRIDE 463 OF MC CUMBER  
CHAPMAN LEGACY 026S  
CHAPMAN ROSE 802U

### DAM'S PROD

BW	WW	WR	YW	YR	SC	AOD	NR
93	721	117	1109	114	40	3	117

The Bandit progeny are highly maternal, structurally sound and offer an added degree of docility for those that demand it. Lot 15 hit the mark in each measurable category from birth to sale day. His young Rito 161 dam is off to an exceptional start and maintains a 372 day CI, breeding back early again to Titanium.



## LOT 16 CHAPMAN MEMENTO 8563

TAT00 SWC 8563F DOB: April 22 2018 REG#: 2127478

### SPRING '20

BW	2.6
WW	56
YW	87
M	22
TM	50
CE	4.0
MCE	2.0

SINCLAIR MEMENTO 8RL5  
**CHAPMAN MEMENTO 0505X**  
CROWFOOT REV ERICA 5752R

SINCLAIR RITO 9R7  
**CHAPMAN IDELETTE 2013Z**  
CHAPMAN IDELETTE 764T

SINCLAIR RITO LEGACY 3R9  
SINCLAIR LADY 06S3 4465  
O C C JOKER 620J  
CROWFOOT ERICA 3906N

RITO REVOLVE 0R5  
SINCLAIR K BTY 6PV5 25F3  
DDA EMBLAZON 27C  
HAPPYVALE NJP IDELETTE 111M

### DAM'S PROD

BW	WW	WR	YW	YR	SC	AOD	NR
86	685	112	1105	114	38	6	106

Consistent numbers across the board for Lot 16. Forage-based pedigree with Emblazon, Joker and Memento. All three sires really stamp their daughters with neat and tidy udders. The females have a little extra back fat that helps in a low input system in northern climates. Rito balances this bull out with added performance and muscle. Dam holds a 364 day CI.



## LOT 17 CHAPMAN TITANIUM 8543

TAT00 SWC 8543F DOB: April 24 2018 REG#: 2127461

### SPRING '20

BW	1.7
WW	43
YW	73
M	22
TM	44
CE	2.0
MCE	5.0

MC CUMBER TITANIUM 3127  
**MC CUMBER TITANIUM 5197**  
MISS WIX 062 OF MC CUMBER

PINEBANK WAIGROUP 41/97  
**CHAPMAN KIWI 634S**  
BARBWALL P ROSE LEE 5140

SINCLAIR FORTUNATE SON  
MSS WIX 926 OF MC CUMBER  
SITZ RAINMAKER 6536  
MISS WIX 6145 OF MC CUMBER

PINEBANK WAIG 31/95  
PINEBANK 639/88  
SHOSHONE LANCE 2315  
BAR PATRIOT ROSE LEE B 2120

### DAM'S PROD

BW	WW	WR	YW	YR	SC	AOD	NR
83	685	112	1033	106	40	12	110

Calving ease prospect from the same cow family as Lot 14. Titanium progeny have an actual average birth weight of 85 lbs and 81 lbs on male and female progeny respectively. Productive cow family: dam holds a 367 day CI, again weaning a top bull calf in 2019, her dam has a WR 11/101 and the granddam has a WR 13/103.




**LOT 18**

## CHAPMAN EQUATE 8531

TATOO SWC 8531F DOB: APRIL 04 2018 REG#: 2129110

**SPRING '20**

BW 1.0  
WW 38  
YW 67  
M 31  
TM 51  
CE 6.0  
MCE 6.0

CROWFOOT EQUATION 5793R  
**CHAPMAN EQUATION 4547B**  
CROWFOOT REV ROSE 5900R

COLE CREEK CEDAR RIDGE 181  
**CHAPMAN LURA 4083B**  
CHAPMAN LURA 782T

O C C LEGACY 839L  
CROWFOOT FORKS 755K  
O C C MOONSHINE 740M  
CROWFOOT CH REV ROSE 1627L  
COLE CREEK CEDAR RIDGE 1V  
COLE CREEK JUANADA CAP 42P  
CHAPMAN ALLIANCE 262M  
CROWFOOT L LURA 9144

**DAM'S PROD**

BW	WW	WR	YW	YR	SC	AOD	NR
88	655	107	1057	109	37	4	115

Balanced individual both numerically and in phenotype. His dam really puts it all into her calves with her 1st effort being a feature of the 2018 sale while holding a 365 day CI. Her dam and granddam have earned a WR of 8/109 and 10/100 respectively. A son of the 782T granddam also sells as lot 57. Juanada Cap 42P is a top cow at Cole Creek in Montana.


**LOT 19**

## CHAPMAN ROBUST 8579

TATOO SWC 8579F DOB: April 27 2018 REG#: 2127472

**SPRING '20**

BW 2.2  
WW 45  
YW 73  
M 18  
TM 41  
CE 2.0  
MCE -2.0

BC SURVEYOR 680D  
**BC ROBUST 0807**  
BC 327-8 CP BELLE 0-807

CHAPMAN RITO LEGACY 218U  
**CHAPMAN PRINCENE 3128A**  
CHAPMAN PRINCENE 3314

BC EAGLE EYE 110-7  
BC 2266 PRIDES LASS 4132 680  
BC PURE PRIDE 327-8  
BC 607 CP BELLE MF 807  
SINCLAIR RITO LEGACY 3R9  
PAT LADY ERICA 8984  
SITZ TRAVELER 9929  
GLADWALL PRINCENE 6320

**DAM'S PROD**

BW	WW	WR	YW	YR	SC	AOD	NR
88	615	100	963	99	40	5	101

A bull with the Robust look and a pedigree laced with proven cows. Lot 19 stems from two productive cow family's: the Belle's and the Princene's. His dam has a 364 day CI, and is a true 1300 lb cow with progeny ratios above average. The maternal granddam posts a WR 12/110 and her dam has a WR 10/109. Plus add in my favorite old donor, Lady Erica 8984, who always shows up behind the good ones.


**LOT 20**

## CHAPMAN RECOURSE 8616

TATOO SWC 8616F DOB: May 03 2018 REG#: 2127479

**SPRING '20**

BW 2.7  
WW 51  
YW 96  
M 18  
TM 44  
CE 4.0  
MCE 5.0

RITO 707 OF IDEAL 3407 7075  
**S A V RESOURCE 1441**  
S A V BLACKCAP MAY 4136

CROWFOOT 2711M  
**CHAPMAN CHLOE 9001W**  
CROWFOOT CHLOE 5879R

R R RITO 707  
IDEAL 3407 OF 1418 076  
S A V 8180 TRAVELER 004  
S A V MAY 2397

LEACHMAN RIGHT TIME  
GLADWALL B CHLOE 7135  
O C C MOONSHINE 740M  
CROWFOOT FORKS 669K

**DAM'S PROD**

BW	WW	WR	YW	YR	SC	AOD	NR
85	598	97	1013	104	40	9	98

A direct son of the highly proven Resource, Lot 20 has a moderate birth weight, but he may be better suited for larger heifers or cows. His dam is an easy keeping Right Time from a cow family that exemplifies fertility and longevity. The maternal granddam will calve again in 2020 and has a WR 12/100 who put 4 bulls in past sales plus 2 retained. The maternal great granddam had a WR 16/100.





**LOT 21**

## CHAPMAN KING TEN 8517

TAT00 SWC 8517F DOB: April 18 2018 REG#: 2127532

SPRING '20		CROWFOOT 9052W		CROWFOOT EQUATION 5793R	
BW	1.5	<b>CHAPMAN KING TEN 4522B</b>		CROWFOOT KELTON 4790P	
WW	53	C H BLACKBIRD 9717		J R SHARPSHOOTER	
YW	87			C H BLACKBIRD 6604	
M	18	SINCLAIR RITO 9R7		RITO REVOLVE OR5	
TM	45	<b>CHAPMAN KAWICH LADY 6021D</b>		SINCLAIR K BTY 6PV5 25F3	
CE	6.0	CHAPMAN KAWICH LADY 659S		S A V 004 PREDOMINANT 4438	
MCE	6.0			CHAPMAN KAWICH LADY 3316	

DAM'S PROD							
BW	WW	WR	YW	YR	SC	AOD	NR
73	670	115	1059	113	40	2	115

**Calving Ease Prospect.** His sire has been used on cows and heifers and he is his dams 1st calf. She is off to a great start, following in the footsteps of a cow family known for producing herd bulls. He bred back 1st cycle in both 2019 and 2020. His paternal grandmother was a donor here and had a WR 14/102 and the maternal grandmother earned a WR 9/103.

**Lot 1**

**View Sale Videos at**  
[WWW.CHAPMANCATTLE.COM](http://WWW.CHAPMANCATTLE.COM)

**LOT 22**

## CHAPMAN CITATION 8558

TAT00 SWC 8558F DOB: April 23 2018 REG#: 2127529

SPRING '20		S A V REGISTRY 2831		RITO 707 OF IDEAL 3407 7075	
BW	2.2	<b>S A V SENSATION 5615</b>		S A V MADAME PRIDE 0075	
WW	45	S A V BLACKCAP MAY 4136		S A V 8180 TRAVELER 004	
YW	85			S A V MAY 2397	
M	17	S B R WATERTON 6148S		LIONHEART OF WICKWIRE	
TM	40	<b>CHAPMAN ROSE 911W</b>		OCTORARO MISS WIX 803	
CE	2.0	CHAPMAN ROSE 741T		D D A FAHREN 21X	
MCE	4.0			CHAPMAN ROSE 43P	

DAM'S PROD							
BW	WW	WR	YW	YR	SC	AOD	NR
86	592	96	1012	104	42	9	103

One of the heavier bulls in the sale, and in similar fashion to the other Sensation-sired bulls, he picked up momentum the older he got. Based on his pedigree and phenotype he has the potential to be used on heifers. His dam is a true reflection of her pedigree. Both Waterton and 21X reduced birth weight and left fertile and efficient daughters that don't go to any extremes—a subtle indicator of longevity.



**LOT 23**

## CHAPMAN CITATION 8618

TAT00 SWC 8618F DOB: May 03 2018 REG#: 2127542

SPRING '20		S A V REGISTRY 2831		RITO 707 OF IDEAL 3407 7075	
BW	2.7	<b>S A V SENSATION 5615</b>		S A V MADAME PRIDE 0075	
WW	47	S A V BLACKCAP MAY 4136		S A V 8180 TRAVELER 004	
YW	90			S A V MAY 2397	
M	24	CROWFOOT EQUATION 5793R		O C C LEGACY 839L	
TM	48	<b>CHAPMAN EILEEN 924W</b>		CROWFOOT FORKS 755K	
CE	2.0	CHAPMAN EILEEN 533R		MC CUMBER 7111 TOTAL VALUE	
MCE	2.0			CHAPMAN G V EILEEN 6230	

DAM'S PROD							
BW	WW	WR	YW	YR	SC	AOD	NR
90	645	105	1070	110	42	9	108

A paternal brother to Lot 22, he will also be one of the heavier bulls in the sale and has a tick more power which would come from the dam. Lot 23 lines up a lot of good cows. The Eileen cow family is known here for their udder structure, originating with the 6230 donor cow who earned a progeny WR 13/102. His pedigree also lines up the productivity of the Miss Wix, Dixie Erica, May and Madame Pride's.





LOT	24	CHAPMAN EQUATE 8508
		TATOO SWC 8508F DOB: APRIL 14 2018 REG#: 2129011
SPRING '20		CROWFOOT EQUATION 5793R <b>XO CROWFOOT EQU 268Z</b> XO CROWFOOT DIXIE ERICA 828U
BW	1.2	SINCLAIR EXQUISITE 1X51 <b>CHAPMAN K PRIDE 4072B</b> CHAPMAN K PRIDE 2091Z
WW	682	O C C LEGACY 839L CROWFOOT FORKS 755K CROWFOOT 6071S CROWFOOT DIXIE ERICA 6422S
YW	1043	N BAR EMULATION EXT C U BEMINDFUL MAID 507E SINCLAIR RITO 9R7 CHAPMAN K PRIDE 8067U
M	24	
TM	41	
CE	6	
MCE	6	
DAM'S PROD		
BW	WW	WR
83	620	111
YW	YR	SC
111	107	40
WR	YR	
102	104	

**Calving Ease Prospect.** This bull checked all the boxes from low birth to weaning to being one of the heavier bulls in the sale. His dam has a record for early gestation, and if the cow family behind the bull is at all important the K Prides get it done. The nursing ratios for the first six K Pride cows in his pedigree read 3/104, 5/106, 9/110 (Elite Association dam), 8/105, 11/109, and 10/106.



LOT	25	CHAPMAN COALITION 8602
		TATOO SWC 8602F DOB: May 01 2018 REG#: 2127482
SPRING '20		SITZ ALLIANCE 6595 <b>CHAPMAN COALITION 4557B</b> CROWFOOT LADY ERICA 3785N
BW	3.9	O C C MAGNUM 749M <b>CROWFOOT PATTIE QUEEN 4584P</b> CROWFOOT PATTIE QUEEN 2552M
WW	41	SITZ TRAVELER 8180 SITZ BARBARAMERE JET 2698 O C C JOKER 620J PAT LADY ERICA 8984
YW	75	O C C EUREKA 865E O C C JUANADA 818E O C C HUNTER 928H GLADWALL PATTIE QUEEN 640
M	26	
TM	47	
CE	1.0	
MCE	4.0	
DAM'S PROD		
BW	WW	WR
95	599	98
YW	YR	SC
1064	110	41
AOD	NR	
14	109	

There is a lot of genetic merit surrounding Lot 25. Paternally he combines Pathfinder Sire Sitz Alliance 6595 with two consecutive donor females in 3785N and 8984. Maternally he is out of a grand old cow who has earned a production record of 12/109. This will be her 9th sale qualified son and she produced the sale high \$ bull in 2018 to J Lazy A. Needless to say she earned donor status in 2019.



LOT	26	CHAPMAN RECOURSE 8656
		TATOO SWC 8656F DOB: MAY 03 2018 REG#: 2129186
SPRING '20		RITO 707 OF IDEAL 3407 7075 <b>S A V RESOURCE 1441</b> S A V BLACKCAP MAY 4136
BW	3.2	S B R WATERTON 6148S <b>CHAPMAN LUELLA 910W</b> CHAPMAN ROSE 792T
WW	53	R R RITO 707 IDEAL 3407 OF 1418 076 S A V 8180 TRAVELER 004 S A V MAY 2397
YW	96	LIONHEART OF WICKWIRE OCTORARO MISS WIX 803 CHAPMAN ALLIANCE 262M GLADWALL ROSE OF L 6310
M	22	
TM	49	
CE	0.0	
MCE	3.0	
BW	WW	WR
86	626	102
YW	YR	SC
1039	106	42
AOD	NR	
9	105	

This bull balances the growth and look of a Resource with the calving ease pedigree of his dam. He has continued to progress from the drought pastures of 2018 into a low input bull development system. His dam is the type that drives profit per acre and there are a lot of cows behind her that produced into their mid-teens.





LOT	27	CHAPMAN ROBUST 8575					
		TAT00 SWC 8575F DOB: April 27 2018 REG#: 2127526					
SPRING '20							
BW	2.1	BC SURVEYOR 680D				BC EAGLE EYE 110-7	
WW	52	BC ROBUST 0807				BC 2266 PRIDES LASS 4132 680	
YW	88	BC 327-8 CP BELLE 0-807				BC PURE PRIDE 327-8	
M	19					BC 607 CP BELLE MF 807	
TM	45	COLE CREEK CEDAR RIDGE 1				COLE CREEK CEDAR RIDGE 1V	
CE	5.0	CROWFOOT BLACKBIRD 3038A				COLE CREEK JUANADA BIRD 38N	
MCE	-1.0	CROWFOOT BLACKBIRD 1045Y				CROWFOOT 9052W	
						CROWFOOT 8011U	
		DAM'S PROD					
BW	WW	WR	YW	YR	SC	AOD	NR
88	661	108	1091	112	42	5	102

One can appreciate the Robust progeny for their phenotype. The dam of Robust won the bred and owned cow/calf division at the 2017 NJAS while both her and her dam topped both divisions in 2016 NJAS. Lot 27 combines a solid statistical proof along with a linebred pedigree blending BC, Cole Creek and 2 shots of OCC Legacy 839L. His dam has earned a solid production record along with a 374 day CI.



LOT	28	CHAPMAN EQUATE 8550					
		TAT00 SWC 8550F DOB: APRIL 25 2018 REG#: 2128987					
SPRING '20		CROWFOOT EQUATION 5793R				O C C LEGACY 839L	
BW	1.0	XO CROWFOOT EQU 268Z				CROWFOOT FORKS 755K	
WW	32	XO CROWFOOT DIXIE ERICA 828U				CROWFOOT 6071S	
YW	52					CROWFOOT DIXIE ERICA 6422S	
M	27	CHAPMAN MEMENTO 0505X				SINCLAIR MEMENTO 8RL5	
TM	43	CHAPMAN ELINE ERICA 4038B				CROWFOOT REV ERICA 5752R	
CE	6.0	XO CROWFOOT ELINE 1521Y				XO CROWFOOT JOKER 8814U	
MCE	5.0					CROWFOOT ELINE 6232S	
		DAM'S PROD					
BW	WW	WR	YW	YR	SC	AOD	NR
87	682	111	1012	104	42	4	107

The next two bulls are very similar in performance and pedigree. Their dams are also very close in productivity and type. One of the heavier bulls at weaning, Lot 28 has a typical Crowfoot-bred pedigree, being paternally double bred OCC Echelon and maternally double bred OCC Joker indicating Lot 28 as an udder fixer. He is backed by a dam with a strong production record and holds a 367 day CI.



LOT	29	CHAPMAN EQUATE 8569					
		TAT00 SWC 8569F DOB: APRIL 19 2018 REG#: 2129157					
SPRING '20		CROWFOOT EQUATION 5793R				O C C LEGACY 839L	
BW	1.2	CHAPMAN EQUATION 4547B				CROWFOOT FORKS 755K	
WW	40	CROWFOOT REV ROSE 5900R				O C C MOONSHINE 740M	
YW	68					CROWFOOT CH REV ROSE 1627L	
M	23	SINCLAIR RITO 9R7				RITO REVOLVE 0R5	
TM	43	CHAPMAN CHLOE 4011B				SINCLAIR K BTY 6PV5 25F3	
CE	5.5	CHAPMAN CHLOE 1041Y				CROWFOOT JOKER 6172S	
MCE	4.5					CROWFOOT CHLOE 5879R	
		DAM'S PROD					
BW	WW	WR	YW	YR	SC	WR	YR
88	613	100	975	100	37	100	105

Lot 29 is right in the middle of the pack for performance. His sire has very good feet and has slowly identified himself through multi sire pastures as a source for balanced trait progeny. His dam holds a 364 day CI and comes from the Chloe cow family known for fertility and longevity.





LOT	30	CHAPMAN RITO 8643					
		TAT00 SWC 8643F DOB: May 11 2018 REG#: 2127534					
SPRING '20		SINCLAIR RITO 9R7				RITO REVOLVE 0R5	
BW	3.0	CHAPMAN RITO 4523B				SINCLAIR K BTY 6PV5 25F3	
WW	47	CHAPMAN CHLOE 125Y				CHAPMAN LEGACY 026S	
YW	79					CHAPMAN CHLOE 814U	
M	17	CROWFOOT JOKER 6172S				O C C JOKER 620J	
TM	41	CHAPMAN LURA 0153X				CFCC 1801L	
CE	2.0	CHAPMAN LURA 782T				CHAPMAN ALLIANCE 259M	
MCE	6.0					CROWFOOT L LURA 9144	
		DAM'S PROD					
BW	WW	WR	YW	YR	SC	AOD	NR
87	629	102	1031	106	43	8	100

One of the heavier sale bulls as expected being a Rito grandson. A frequent comment we get on the cowherd is the uniformity across 500 registered females. The dam of Lot 30 would have a tick more frame than the average and holds a 364 day CI. The Rito bulls have been the cowboy kind.



LOT	31	CHAPMAN CITATION 8629					
		TAT00 SWC 8629F DOB: May 04 2018 REG#: 2127477					
SPRING '20		S A V REGISTRY 2831			RITO 707 OF IDEAL 3407 7075		
BW	1.2	S A V SENSATION 5615			S A V MADAME PRIDE 0075		
WW	48	S A V BLACKCAP MAY 4136			S A V 8180 TRAVELER 004		
YW	87				S A V MAY 2397		
M	20	D H D TRAVELER 6807			Q A S TRAVELER 23-4		
TM	44	ZWT PRIMROSE 2286			BEMINDFUL MAID D H D 0807		
CE	5.5	N BAR PRIMROSE Y3051			N BAR EMULATION EXT		
MCE	4.5				N BAR PRIMROSE 2429		
		DAM'S PROD					
BW	WW	WR	YW	YR	SC	AOD	NR
84	655	107	999	103	41	9	109

Calving Ease Prospect and one of the better bulls in the pen. As seen with the Sensation progeny, they have the ability to start small and then grow. Lot 31 did just that and has a unique pedigree. His 6807 sired dam is a daughter of the Pathfinder donor, N Bar Primrose Y3051, who also produced Sinclair Emulation XXP. The mother of Y3051 is a sister to the dam of N Bar Emulation EXT. Add in SAV Blackcap May 4136 and Lot 31 warrants consideration based on cow power alone.



LOT	32	CHAPMAN EQUATE 8514					
		TAT00 SWC 8514F DOB: APRIL 17 2018 REG#: 2128979					
SPRING '20		CROWFOOT EQUATION 5793R			O C C LEGACY 839L		
BW	0.1	XO CROWFOOT EQU 268Z			CROWFOOT FORKS 755K		
WW	44	XO CROWFOOT DIXIE ERICA 828U			CROWFOOT 6071S		
YW	69				CROWFOOT DIXIE ERICA 6422S		
M	24	COLE CREEK GOLDMERE 581			COLE CREEK GOLDMERE 70V		
TM	46	CHAPMAN NEONIA 4014B			COLE CREEK JUANADA 92T		
CE	9.0	CHAPMAN NEONIA 2009Z			SINCLAIR RITO 9R7		
MCE	8.0				CHAPMAN NEONIA 774T		
		DAM'S PROD					
BW	WW	WR	YW	YR	SC	AOD	NR
86	641	104	1021	105	43	4	105

Projected to be one of the heavier bulls in the sale, Lot 32 is balanced across the board and offers a modest birth weight with a calving ease EPD profile, ranking in the top 10% of the breed for BW and CE. His dam maintains a strong production record while holding a 364 day CI. The original Neonia cow traces back to the same Jorgensen breeding that is found in the lineage of the Memento's and Rito 9R7.





## LOT 33 CHAPMAN EQUIVALENCE 8651

TAT00 SWC 8651F DOB: May 20 2018 REG#: 2127545

### SPRING '20

BW -1.2  
WW 43  
YW 75  
M 23  
TM 45  
CE 12.0  
MCE 9.0

CROWFOOT EQUATION 5793R  
**XO CROWFOOT EQU 268Z**  
XO CROWFOOT DIXIE ERICA 828U

CHAPMAN LEGACY 026S  
**CHAPMAN ROSE 953W**  
CHAPMAN ROSE 43P

O C C LEGACY 839L  
CROWFOOT FORKS 755K  
CROWFOOT 6071S  
CROWFOOT DIXIE ERICA 6422S

O C C LEGACY 839L  
PAT LADY ERICA 8984  
CROWFOOT BRUNO 1670L  
CHAPMAN ROSE OF L 6242

### DAM'S PROD

BW	WW	WR	YW	YR	SC	AOD	NR
72	659	107	1079	111	37	9	105

Calving Ease Prospect with just a 72 lb. birthweight, an EPD profile where he ranks in the top 4% of the breed for BW and the top 3% for CE, and a pedigree that reads calving ease. Based on his individual performance though, he has the potential to be more than just a heifer opener. The calves by his sire are always up and going in quick fashion too. Lots of good old cows lined up behind Lot 33.

Internet Bidding Available

**D | L | M | S**  
*www.dlms.ca*

For more information call DLMS:  
Mark Shologan 780.699.5082 or  
DLMS Purebred Team 780.991.3025

## LOT 34 CHAPMAN EQUATE 8549

TAT00 SWC 8549F DOB: APRIL 25 2018 REG#: 2128970

### SPRING '20

BW 0.9  
WW 38  
YW 66  
M 25  
TM 44  
CE 5.0  
MCE 3.0

CROWFOOT EQUATION 5793R  
**CHAPMAN EQUATION 4547B**  
CROWFOOT REV ROSE 5900R

MC CUMBER 8R101 RITO 161  
**CHAPMAN ROSE 4025B**  
CHAPMAN KIWI ROSE 011X

O C C LEGACY 839L  
CROWFOOT FORKS 755K  
O C C MOONSHINE 740M  
CROWFOOT CH REV ROSE 1627L

SINCLAIR ENTREPRENEUR 8R101  
B PRIDE 463 OF MC CUMBER  
SHALOM WAIGROUP 519/94  
CHAPMAN ROSE 621S

### DAM'S PROD

BW	WW	WR	YW	YR	SC	AOD	NR
88	625	102	1040	107	36	4	99

Lot 34 and 35 are very similar in type and pedigree. Their dams are also very similar in type and in their production record. We like proven and predictable genetics. There is nothing riskier than being someone's genetic guinea pig. OCC Legacy and his sons show up a lot because they do a lot of things consistently right. The dam of Lot 34 holds a 379 day CI, is herd average for production and calves in the first cycle.

## LOT 35 CHAPMAN EQUATE 8557

TAT00 SWC 8557F DOB: April 26 2018 REG#: 2128971

### SPRING '20

BW 0.5  
WW 30  
YW 56  
M 30  
TM 45  
CE 6.0  
MCE 3.0

CROWFOOT EQUATION 5793R  
**CHAPMAN EQUATION 4547B**  
CROWFOOT REV ROSE 5900R

CROWFOOT JOKER 2029Z  
**CHAPMAN K PRIDE 4140B**  
CHAPMAN PRIDE 710T

O C C LEGACY 839L  
CROWFOOT FORKS 755K  
O C C MOONSHINE 740M  
CROWFOOT CH REV ROSE 1627L

CROWFOOT JOKER 6172S  
CROWFOOT BLACKBIRD 2537M  
CHAPMAN PAY DAY 4456  
CHAPMAN PRIDE 551R

### DAM'S PROD

BW	WW	WR	YW	YR	SC	AOD	NR
73	595	97	975	100	37	4	99

Calving Ease Prospect. Lot 35 is a four-star calving ease bull and his dam backs that up with an early gestation CI of 358. His sire averages 86 lbs and 81 lbs on male and female progeny. The calves are born unassisted and have a lot of vigor. Note Lot 35 has several sires and 3 dams designated Elite by the Association. The first 4 maternal granddams have a combined average WR 10/104 with a 387 day CI.





LOT

36

**CHAPMAN EQUATOR 8526**

TAT00 SWC 8526F DOB: April 21 2018 REG#: 2127555

## SPRING '20

BW 1.7  
WW 49  
YW 81  
M 23  
TM 48  
CE 6.0  
MCE 6.0

COLE CREEK BLACK CEDAR 1251  
**CHAPMAN EQUATOR 4515B**  
CROWFOOT BLACKBIRD 6369S

CHAPMAN MEMENTO 0505X  
**CHAPMAN ROSEBUD 6059D**  
CHAPMAN ROSEBUD 736T

COLE CREEK BLACK CEDAR 46P  
COLE CREEK JUANADA SHE 48T  
O C C LEGACY 839L  
CROWFOOT BLACKBIRD 1687L

SINCLAIR MEMENTO 8RL5  
CROWFOOT REV ERICA 5752R  
D D A FAHREN 21X  
BEVALEN ROSEBUD 11K

## DAM'S PROD

BW	WW	WR	YW	YR	SC	AOD	NR
75	701	120	1135	121	38	2	120

Calving Ease Prospect who is balanced in every measurable category. He was born to a first calf heifer who is off to a great start. She has calved in the first cycle each year and is expecting a Coleman Forte 752 calf in 2020. The udders on the 4515B daughters are our best. Lots of productive cows behind Lot 36: 6369 WR 9/103, 1687 WR 11/104, 9410 WR 14/102, 5752 10/103 — all who have been donors.

**KLUZAK PRIDE 256 - FOUNDED DAM OF THE K PRIDE'S**

LOT

37

**CHAPMAN EQUATE 8591**

TAT00 SWC 8591F DOB: APRIL 29 2018 REG#: 2129066

## SPRING '20

BW 1.7  
WW 32  
YW 56  
M 27  
TM 43  
CE 5.0  
MCE 5.0

CROWFOOT EQUATION 5793R  
**CHAPMAN EQUATION 4547B**  
CROWFOOT REV ROSE 5900R

CHAPMAN MEMENTO 0505X  
**CHAPMAN B PRIDE 4097B**  
CHAPMAN B PRIDE 9013W

O C C LEGACY 839L  
CROWFOOT FORKS 755K  
O C C MOONSHINE 740M  
CROWFOOT CH REV ROSE 1627L

SINCLAIR MEMENTO 8RL5  
CROWFOOT REV ERICA 5752R  
CROWFOOT MACHO 4549P  
CHAPMAN PRIDE 729T

## DAM'S PROD

BW	WW	WR	YW	YR	SC	AOD	NR
88	584	95	999	103	37	4	102

The pedigree is full of lower birth weight sires that go back to OCC Magnum, OCC Moonshine, OCC Joker, and OCC Legacy (twice). His dam has that forage-efficient look you'd expect from lining up forage-efficient sires. There are several dams designated Elite by the association in his pedigree, and his dam has produced above average while maintaining a 370 day CI.



LOT

38

**CHAPMAN ROBUST 8507**

TAT00 SWC 8507F DOB: April 13 2018 REG#: 2127480

## SPRING '20

BW 1.7  
WW 56  
YW 87  
M 13  
TM 41  
CE 6.0  
MCE 1.0

BC SURVEYOR 680D  
**BC ROBUST 0807**  
BC 327-8 CP BELLE 0-807

SINCLAIR RITO 9R7  
**CHAPMAN FAHRENESS 3025A**  
CHAPMAN FAHRENESS 916W

BC EAGLE EYE 110-7  
BC 2266 PRIDES LASS 4132 680  
BC PURE PRIDE 327-8  
BC 607 CP BELLE MF 807

RITO REVOLVE 0R5  
SINCLAIR K BTY 6PV5 25F3  
CROWFOOT MACHO 4549P  
CHAPMAN FAHRENESS 678S

## DAM'S PROD

BW	WW	WR	YW	YR	SC	AOD	NR
84	635	104	988	102	38	5	96

Versatile in his application, Lot 38 is a bull that could be used several ways. Balanced statistically and in phenotype, you'll appreciate these Robust sons. His dam maintains a 362 day calving interval and is right in the middle of the herd for productivity, while calving early in the first cycle each year. Match him up and turn him out with Lot 39 as they are very similar.





ROBUST DAUGHTER

## LOT 39 CHAPMAN ROBUST 8648

TAT00 SWC 8648F DOB: May 12 2018 REG#: 2127460

SPRING '20		BC SURVEYOR 680D		BC EAGLE EYE 110-7			
BW	1.8	BC ROBUST 0807	BC 2266 PRIDES LASS 4132 680				
WW	46	BC 327-8 CP BELLE 0-807	BC PURE PRIDE 327-8				
YW	69		BC 607 CP BELLE MF 807				
M	18	CROWFOOT JOKER 6172S	O C C JOKER 620J				
TM	41	CHAPMAN BETSEY 3030A	CFCC 1801L				
CE	6.0	CHAPMAN BETSEY 704T	G A R TRAVELER 1489				
MCE	1.0		CROWFOOT BETSEY 5853R				
				DAM'S PROD			
BW	WW	WR	YW	YR	SC	AOD	NR
85	664	108	985	101	39	5	100

Another Robust son that is statistically very similar to his Lot 38 brother and could be used several ways. He has a nice birth to weaning spread and should leave some stylish calves. His Joker-bred dam maintains a calving interval of 373 days from a line of cows that all produced into their mid-teens.

## LOT 40 CHAPMAN RITO 8621

TAT00 SWC 8621F DOB: May 06 2018 REG#: 2127465

SPRING '20							
BW	2.1	SINCLAIR RITO 9R7 CHAPMAN RITO 4523B			RITO REVOLVE 0R5 SINCLAIR K BTY 6PV5 25F3		
WW	47	CHAPMAN CHLOE 125Y			CHAPMAN LEGACY 026S CHAPMAN CHLOE 814U		
YW	78				SINCLAIR RITO LEGACY 3R9		
M	17	SINCLAIR MEMENTO 8RL5			SINCLAIR LADY 06S3 4465		
TM	41	CHAPMAN CHLOE 0129X			LEACHMAN RIGHT TIME		
CE	4.0	CHAPMAN CHLOE 428P			GLADWALL B CHLOE 623		
MCE	8.0						
DAM'S PROD							
BW	WW	WR	YW	YR	SC	AOD	NR
88	643	105	1059	109	43	8	104

Bred and fed to breed a lot of cows for a lot of years, Lot 40 is a double-bred Rito x Traveler x Emulation — old foundation bloodlines. Lot 40 originates from the Chloe family that produced last years' high selling bull and the good Lot 10 this year. Lot 40's dam has an exceptional udder and there is longevity bred in as well. Her dam hasn't missed and will have her 14th calf in 2020, earning a progeny WR 13/97.

## LOT 41 CHAPMAN BLUE RIDGE 8645

TAT00 SWC 8645F DOB: May 11 2018 REG#: 2127496

SPRING '20		W R A CEDAR RUN A7 WRA CEDAR RUN D2 W R A SARAH 237W	COLE CREEK CEDAR RIDGE 1V W R A EILEEN BAR 115P W R A ARISTOCRAT R4 W R A SARAH 237G				
BW	1.5		O C C JOKER 620J				
WW	31		CFCC 1801L				
YW	60	CROWFOOT JOKER 6172S	CHAPMAN PAY DAY 4456				
M	29	CHAPMAN NELLIE 0111X	CHAPMAN NELLIE 524R				
TM	45	CHAPMAN NELLIE 744T					
CE	4.0						
MCE	7.0						
DAM'S PROD							
BW	WW	WR	YW	YR	SC	AOD	NR
82	624	102	985	101	41	8	102

Calving Ease Prospect that is above average in his individual performance. His dam has been designated Elite by the Association and is from a cow family that has a track record for fertility and longevity. She maintains a 371 day CI, and the dams behind her have an average WR 13/102. Her sire, Joker 6172S, and his dam 1801L, both have a heifer pregnancy EPD in the top 1% of the breed and Jokers dam is also designated Elite.



MATERNAL BROTHER TO LOT 42

## LOT 42 CHAPMAN BLUE RIDGE 8577

TAT00 SWC 8577F DOB: April 27 2018 REG#: 2127528

SPRING '20		W R A CEDAR RUN A7			COLE CREEK CEDAR RIDGE 1V		
BW	0.3	WRA CEDAR RUN D2			W R A EILEEN BAR 115P		
WW	25	W R A SARAH 237W			W R A ARISTOCRAT R4		
YW	43				W R A SARAH 237G		
M	29	CROWFOOT JOKER 6172S			O C C JOKER 620J		
TM	42	CHAPMAN PRIDE 0120X			CFCC 1801L		
CE	6.0	CHAPMAN PRIDE 780T			RED SSS JUSTICE 174R		
MCE	8.0				CHAPMAN PRIDE 4409		
DAM'S PROD							
BW	WW	WR	YW	YR	SC	AOD	NR
80	622	101	915	94	42	8	103

Calving Ease Prospect who should sire the efficient kind. D2 came from Virginia where he thrived in a fescue-based environment and Joker has proven his ability to sire low input cattle. His dam holds a 366 day CI and is a product of the productive K Pride cow family. The first 5 maternal dams have earned a progeny WR record of 7/103, 9/110, 8/109, 11/108 and 10/102 with an average combined 380 day CI.





LOT	43	CHAPMAN EQUATE 8509					
		TAT00 SWC 8509F DOB: APRIL 14 2018 REG#: 2129057					
SPRING '20							
BW	0.6	CROWFOOT EQUATION 5793R	O C C LEGACY 839L				
WW	34	XO CROWFOOT EQU 268Z	CROWFOOT FORKS 755K				
YW	60	XO CROWFOOT DIXIE ERICA 828U	CROWFOOT 6071S				
M	28	CHAPMAN MEMENTO 0505X	CROWFOOT DIXIE ERICA 6422S				
TM	45	CHAPMAN PEARL 4126B	SINCLAIR MEMENTO 8RL5				
CE	7.0	CHAPMAN PEARL 8061U	CROWFOOT REV ERICA 5752R				
MCE	5.0		CROWFOOT EQUATION 5793R				
			CHAPMAN PEARL 4404				
		DAM'S PROD					
BW	WW	WR	YW	YR	SC	AOD	NR
81	671	109	951	98	39	4	105

Calving Ease Prospect with a CE EPD in the top 20% who weaned near the top after being shuffled around to find enough grass in the drought of 2018. His dam maintains a 364 day CI. His Milk EPD is in the top 7% of the breed and his pedigree tabulates Joker, Memento, Equation, Legacy, Right Time and Shoshone Pied Piper, so you get breed leading milk without worrying about udder longevity.

LOT	44	CHAPMAN COALITION 8627					
		TAT00 SWC 8627F DOB: May 04 2018 REG#: 2127491					
SPRING '20							
BW	2.2	SITZ ALLIANCE 6595					
WW	43	CHAPMAN COALITION 4557B					
YW	70	CROWFOOT LADY ERICA 3785N					
M	24	SINCLAIR IN TIME 9RT10					
TM	46	CHAPMAN DUCHESS 1020Y					
CE	2.0	CHAPMAN DUCHESS 8009U					
MCE	8.0						
		SITZ TRAVELER 8180					
		SITZ BARBARAMERE JET 2698					
		O C C JOKER 620J					
		PAT LADY ERICA 8984					
		LEACHMAN RIGHT TIME					
		N BAR ENCHANTRESS 4908					
		O C C MOONSHINE 740M					
		CHAPMAN DUCHESS 4403					
		DAM'S PROD					
BW	WW	WR	YW	YR	SC	AOD	NR
88	685	112	988	102	40	7	104

Utilize this bull for his maternal merit of his replacement females. He has solid performance numbers and is backed by some proven maternal sires up close in his pedigree including Alliance, Joker, Right Time and Moonshine. He has the lineage to be an udder fixer too. These Coalition sons are all higher up for Milk, Total Maternal and Maternal Calving Ease EPD's. His dam maintains a 366 day CI.



MATERNAL BROTHER TO LOT 45

LOT	45	CHAPMAN EQUATE 8522					
		TAT00 SWC 8522F DOB: APRIL 19 2018 REG#: 2129187					
SPRING '20							
BW	0.4	CROWFOOT EQUATION 5793R	O C C LEGACY 839L				
WW	35	XO CROWFOOT EQU 268Z	CROWFOOT FORKS 755K				
YW	66	XO CROWFOOT DIXIE ERICA 828U	CROWFOOT 6071S				
M	28		CROWFOOT DIXIE ERICA 6422S				
TM	46	COLE CREEK CEDAR RIDGE 181	COLE CREEK CEDAR RIDGE 1V				
CE	8.5	CHAPMAN ROSE 4191B	COLE CREEK JUANADA CAP 42P				
MCE	6.3	CHAPMAN ROSE 926W	CROWFOOT EQUATION 5793R				
			CHAPMAN ROSE 429P				
		DAM'S PROD					
BW	WW	WR	YW	YR	SC	AOD	NR
80	617	101	898	100	38	4	98

Calving Ease Prospect with a calving ease pedigree. He is in the top 15% and 10% for BW and CE EPD's respectively. His dam is an easy fleshing cow that holds a 369 day CI. Her dam, 926W, raised the Lot 02 in this sale. These bulls have never seen supplement until 18 months of age. They breed up beyond their means and provide more years on your bull investment without getting too big for heifers.





MATERNAL BROTHER TO LOT 46

## LOT 46 CHAPMAN TITANIUM 8640

TAT00 SWC 8640F DOB: May 06 2018 REG#: 2127519

## SPRING '20

BW	2.1
WW	39
YW	81
M	24
TM	44
CE	3.0
MCE	4.0

MC CUMBER TITANIUM 3127  
**MC CUMBER TITANIUM 5197**  
 MISS WIX 062 OF MC CUMBER

CROWFOOT VENTURE 1698L  
**CHAPMAN ZARA BAND 625S**  
 CHAPMAN ZARA BAND 438P

SINCLAIR FORTUNATE SON  
 MSS WIX 926 OF MC CUMBER  
 SITZ RAINMAKER 6536  
 MISS WIX 6145 OF MC CUMBER

BASIN MAX 104J  
 GLADWALL SARITA 8255  
 LEACHMAN RIGHT TIME  
 GLADWALL B ZARA BAND 6355

## DAM'S PROD

BW	WW	WR	YW	YR	SC	AOD	NR
87	621	101	1050	108	37	12	105

With a Heifer Pregnancy EPD ranking in the top 10% of the breed, Lot 46 is a candidate to sire profitable and long-lasting replacements. The dam of Lot 46 has a solid production record and stems from a long line of productive cows with an average progeny WR 11/105. She hasn't missed and will have her 12th calf in 2020. Titanium's Pathfinder dam has a progeny WR 7/106 and stems from a long line of top cows from the Miss Wix family. Expect a Titanium derivative to improve on anything tall and skinny.



ROBUST DAUGHTER

## LOT 47 CHAPMAN ROBUST 8706

TAT00 SWC 8706F DOB: MAY 15 2018 REG#: Pending

## SPRING '20

BW	1.0
WW	45
YW	73
M	19
TM	41
CE	6.5
MCE	0.5

BC SURVEYOR 680D  
**BC ROBUST 0807**  
 BC 327-8 CP BELLE 0-807

CROWFOOT EQUATION 5793R  
**XO CROWFOOT MERLE 337A**  
 CROWFOOT MERLE 6338S

BC EAGLE EYE 110-7  
 BC 2266 PRIDES LASS 4132 680  
 BC PURE PRIDE 327-8  
 BC 607 CP BELLE MF 807

O C C LEGACY 839L  
 CROWFOOT FORKS 755K  
 O C C LEGACY 839L  
 C H MERLE 9701

## DAM'S PROD

BW	WW	WR	YW	YR	SC	AOD	NR
83	667	100	956	100	40	5	102

Calving Ease Prospect and another stylish Robust son that is clean in his lines and square in his stance. His dam is a smaller framed Crowfoot cow who hasn't missed with a WR 4/102 while maintaining a 381 day calving interval. She was in a group of 70 cows that Robust bred naturally in 2019.



## LOT 48 CHAPMAN EQUATE 8685

TAT00 SWC 8685F DOB: MAY 11 2018 REG#: 2129161

## SPRING '20

BW	1.6
WW	34
YW	58
M	27
TM	43
CE	4.0
MCE	2.5

CROWFOOT EQUATION 5793R  
**CHAPMAN EQUATION 4547B**  
 CROWFOOT REV ROSE 5900R

MC CUMBER 8R101 RITO 161  
**CHAPMAN REV ERICA 4109B**  
 CHAPMAN REV ERICA 0128X

O C C LEGACY 839L  
 CROWFOOT FORKS 755K  
 O C C MOONSHINE 740M  
 CROWFOOT CH REV ROSE 1627L

SINCLAIR ENTREPRENEUR 8R101  
 B PRIDE 463 OF MC CUMBER  
 CROWFOOT JOKER 6172S  
 CHAPMAN REV ERICA 705T

## DAM'S PROD

BW	WW	WR	YW	YR	SC	AOD	NR
77	692	113	1031	106	41	4	107

Calving Ease Prospect with a solid set of weaning and yearling ratios. His dam is a productive McCumber 161 daughter who has a 376 day CI. The 161 daughters seem to get better every year and they have the look of the B Pride of McCumber 463 Pathfinder donor. In fact there is a lot of cow power behind Lot 48, with no less than 5 Elite Association cows in his pedigree including 4 ET donors.





CROWFOOT KELTON 2105Z - PGD OF LOT 49

LOT	49	CHAPMAN GOLDMERE 8530					
		TAT00 SWC 8530F DOB: April 20 2018 REG#: 2127485					
SPRING '20		COLE CREEK GOLDMERE 581					
BW 3.6		RICHMOND BANDIT SRD 67B					
WW 59		CROWFOOT KELTON 2015Z					
YW 89							
M 24		SINCLAIR RITO 9R7					
TM 54		CHAPMAN LURA 5122C					
CE -1.0		CHAPMAN LURA 8064U					
MCE 4.0		COLE CREEK GOLDMERE 70V					
		COLE CREEK JUANADA 92T					
		CROWFOOT EQUATION 5793R					
		CROWFOOT PATTI 7043T					
		RITO REVOLVE 0R5					
		SINCLAIR K BTY 6PV5 25F3					
		CROWFOOT EQUATION 5793R					
		CHAPMAN LURA 446P					
		DAM'S PROD					
BW	WW	WR	YW	YR	SC	AOD	NR
92	722	118	1024	105	39	3	115

The Bandit sired bulls have been popular in the past and Lot 49 weaned off as one of the heaviest. They are thick made, good footed, docile cattle that are well above breed average for Milk and Total Maternal EPD's. His young Rito 9R7 dam has a calving interval of 375 days and obviously hits the mark with a progeny WR 2/115.



CHAPMAN MEMENTO 0509X - MATERNAL GRAND SIRE OF LOT 47 AND 50

LOT	50	CHAPMAN GOLDMERE 8556					
		TAT00 SWC 8556F DOB: April 26 2018 REG#: 2127541					
SPRING '20		COLE CREEK GOLDMERE 581			COLE CREEK GOLDMERE 70V		
BW 2.6		RICHMOND BANDIT SRD 67B			COLE CREEK JUANADA 92T		
WW 42		CROWFOOT KELTON 2015Z			CROWFOOT EQUATION 5793R		
YW 68					CROWFOOT PATTI 7043Z		
M 25		CHAPMAN MEMENTO 0509X			SINCLAIR MEMENTO 8RL5		
TM 46		CHAPMAN PRIDE 5147C			CROWFOOT CHLOE 5879R		
CE 2.0		CHAPMAN PRIDE 3081A			CROWFOOT JOKER 6172S		
MCE 7.0					CHAPMAN PRIDE 775T		
		DAM'S PROD					
BW	WW	WR	YW	YR	SC	AOD	NR
86	627	102	952	98	39	3	108

Lot 49 and 50 are very similar in age, type, sire, and their dams production record. Lot 50 offers a little less performance than Lot 49, but also offers reduced birth weight. The Bandit progeny are wide-muzzled forage converters tailored for any grass-based outfit. His young dam holds a 381 day CI and a progeny WR 2/108.



MISS WIX 6145 OF MCCUMBER - PATERNAL GRAND DAM OF LOT 51

LOT	51	CHAPMAN TITANIUM 8637					
		TAT00 SWC 8637F DOB: May 06 2018 REG#: 2127513					
SPRING '20		MC CUMBER TITANIUM 3127					
		MC CUMBER TITANIUM 5197					
		MISS WIX 062 OF MC CUMBER					
		O C C LEGACY 839L					
		XO CROWFOOT 6V LASS 848U					
		CROWFOOT 6V LASS 6383S					
		SINCLAIR FORTUNATE SON					
		MSS WIX 926 OF MC CUMBER					
		SITZ RAINMAKER 6536					
		MISS WIX 6145 OF MC CUMBER					
		O C C ECHELON 857E					
		O C C DIXIE ERICA 960E					
		CROWFOOT 2711M					
		CROWFOOT FORKS 657K					
		DAM'S PROD					
BW	WW	WR	YW	YR	SC	AOD	NR
88	563	92	961	99	38	10	99

Lot 51 should have been ratioed separate as his dam had health issues early on. She came around but it is evident that it impeded how he weaned off. She is a good OCC Legacy cow selected out of the Crowfoot Dispersal and has a 384 day CI. His post-weaning gain shows he picked up the pace. His Heifer Pregnancy EPD ranks in the top 10% of the breed and combines several Miss Wix donors with Emulation EXT and Right Time top and bottom.





LOT	52	CHAPMAN EQUATE 8532						
		TATOO SWC 8532F DOB: APRIL 20 2018 REG#: 2129156						
		SPRING '20						
		BW	0.4	CROWFOOT EQUATION 5793R				
		WW	27	CHAPMAN EQUATION 4547B				
		YW	51	CROWFOOT REV ROSE 5900R				
		M	27	CHAPMAN MEMENTO 0505X				
		TM	40	CHAPMAN LURA 4052B				
		CE	6.5	CHAPMAN LURA 614S				
		MCE	5.0					
			O C C LEGACY 839L					
			CROWFOOT FORKS 755K					
			O C C MOONSHINE 740M					
			CROWFOOT CH REV ROSE 1627L					
			SINCLAIR MEMENTO 8RL5					
			CROWFOOT REV ERICA 5752R					
			CROWFOOT VENTURE 1698L					
			CHAPMAN LURA 446P					
			DAMMSPROOD					
BW		WW	WR	YW	YR	SC	AOD	NR
80		595	97	970	100	38	4	95

Calving Ease Prospect who sits in the group average for individual performance. His entire pedigree reads calving ease. His BW EPD sits in the top 15% of the breed with a Milk EPD in the top 10%.



2015 HIGH SELLER PRODUCED BY THE SAME COW FAMILY AS LOT 53

LOT	53	CHAPMAN GOLDMERE 8588					
		TATOO SWC 8588F DOB: April 29 2018 REG#: 2127504					
SPRING '20							
BW	3.7	COLE CREEK GOLDMERE 581	COLE CREEK GOLDMERE 70V				
WW	43	RICHMOND BANDIT SRD 67B	COLE CREEK JUANADA 92T				
YW	72	CROWFOOT KELTON 2015Z	CROWFOOT EQUATION 5793R				
M	27		CROWFOOT PATTI 7043T				
TM	49	CHAPMAN MEMENTO 0513X	SINCLAIR MEMENTO 8RL5				
CE	-1.0	CHAPMAN KAWICH LADY 5160C	CROWFOOT LOVEMERE PET 5791R				
MCE	5.0	CHAPMAN KAWICH LADY 434P	LEACHMAN RIGHT TIME				
			GLADWALL KAWICH LADY 6171				
		DAM'S PROD					
BW	WW	WR	YW	YR	SC	AOD	NR
92	646	105	999	103	39	3	111

Here is another Bandit-sired cow bull that was above group average in every measurable category. He is also backed by some top Crowfoot-bred cows. 2015Z was the high \$ bred heifer and her dam was a higher \$ cow to Oklahoma in the Crowfoot Dispersal. 5791R was a higher \$ bred heifer in their dispersal too; and became a donor here. Lot 53's dam is off to a great start and has a 370 day CI. Her mother, 434P, posts a progeny WR 13/105 and is currently in the donor pen along with the dam of Lot 25.



2017 HIGH SELLER PRODUCED FROM THE SAME COW FAMILY AS LOT 54

LOT	54	CHAPMAN RITO 8703					
		TATOO SWC 8703F DOB: May 14 2018 REG#: 2127523					
SPRING '20							
BW	1.2	SINCLAIR RITO 9R7	RITO REVOLVE 0R5				
WW	57	CHAPMAN RITO 4523B	SINCLAIR K BTY 6PV5 25F3				
YW	81	CHAPMAN CHLOE 125Y	CHAPMAN LEGACY 026S				
M	18		CHAPMAN CHLOE 814U				
TM	47	SINCLAIR RITO 9R7	RITO REVOLVE 0R5				
CE	6.0	CHAPMAN ROSE 3146A	SINCLAIR K BTY 6PV5 25F3				
MCE	6.0	CHAPMAN ROSE 9085W	CROWFOOT EQUATION 5793R				
			CROWFOOT ROSE 3767N				
		DAM'S PROD					
BW	WW	WR	YW	YR	SC	AOD	NR
86	717	117	1006	104	42	5	101

Achieving one of the highest adjusted weaning weights off drought pasture, he is a high ratioing Rito with a modest birth weight and a balanced EPD profile. In fact, he is double-bred Sinclair Rito and double-bred OCC Legacy. The dam of Lot 54 has a 375 day CI and her dam has a progeny WR 6/109 and is an Elite cow in the Association. The maternal granddam earned a progeny WR 13/113 and produced a former high \$ sale bull to Corrie Richardson.





OCC LEGACY 839L - PATERNAL GRAND SIRE AND MATERNAL GRAND SIRE OF LOT 55

LOT	55	CHAPMAN EQUATE 8506
		TATOO SWC 8506F DOB: APRIL 14 2018 REG#: 2129012
SPRING '20		CROWFOOT EQUATION 5793R <b>XO CROWFOOT EQU 268Z</b> XO CROWFOOT DIXIE ERICA 828U
BW	-0.2	
WW	34	
YW	62	
M	27	
TM	43	
CE	8.5	
MCE	6.0	
		XO CROWFOOT EQU 268Z <b>CHAPMAN JEANNE 4103B</b> CHAPMAN JEANNE 8080U
		O C C LEGACY 839L CROWFOOT FORKS 755K CROWFOOT 6071S CROWFOOT DIXIE ERICA 6422S CROWFOOT EQUATION 5793R XO CROWFOOT DIXIE ERICA 828U O C C MOONSHINE 740M CHAPMAN JEANNE 4402
		DAM'S PROD
		BW WW WR YW YR SC AOD NR
		76 552 90 904 93 37 4 104

Calving Ease Prospect with a Crowfoot-bred pedigree. He currently ranks in the top 10% of the breed for BW and CE EPD's. His dam has a 364 day CI and the maternal granddam and maternal great granddam have a progeny weaning ratio of 8/101 and 8/105 respectively. With an inbreeding coefficient of 29%, Lot 55 has a genetic concentration where the outcross mating may see some real hybrid vigor.



SINCLAIR 3RC33 - MATERNAL GRAND SIRE OF LOT 56

LOT	56	CHAPMAN GOLDMERE 8515
		TATOO SWC 8515F DOB: April 17 2018 REG#: 2127544
SPRING '20		COLE CREEK GOLDMERE 581 <b>RICHMOND BANDIT SRD 67B</b> CROWFOOT KELTON 2015Z
BW	3.7	
WW	45	
YW	73	
M	23	
TM	46	
CE	-2.0	
MCE	3.0	
		SINCLAIR BROKER 3RC33 <b>CHAPMAN SARITA 5143C</b> CHAPMAN SARITA 655S
		COLE CREEK GOLDMERE 70V COLE CREEK JUANADA 92T CROWFOOT EQUATION 5793R CROWFOOT PATTI 7043T SINCLAIR ENTREPRENEUR 8R101 SINCLAIR LADY IDA 8XV12 C52 SITZ TRADITION RLS 8702 CHAPMAN SARITA 3321
		DAM'S PROD
		BW WW WR YW YR SC AOD NR
		88 619 101 953 98 38 3 98

Lot 56 is not extreme in any sense and fits into the average of his large contemporary group. Expect good feet and docility with the Bandits. His dam is a long bodied, smaller framed female typical of the Broker daughters. They really emulate Brokers Pathfinder dam at Sinclair Cattle. They are fertile, have well attached udders and are excellent mothers. This young dam holds a CI of 362 days.



LOT	57	CHAPMAN TITANIUM 8657
		TATOO SWC 8657F DOB: May 16 2018 REG#: 2127467
SPRING '20		MC CUMBER TITANIUM 3127 <b>MC CUMBER TITANIUM 5197</b> MISS WIX 062 OF MC CUMBER
BW	1.9	
WW	50	
YW	92	
M	24	
TM	49	
CE	3.0	
MCE	5.0	
		CHAPMAN ALLIANCE 259M <b>CHAPMAN LURA 782T</b> CROWFOOT L LURA 9144
		SINCLAIR FORTUNATE SON MSS WIX 926 OF MC CUMBER SITZ RAINMAKER 6536 MISS WIX 6145 OF MC CUMBER SITZ ALLIANCE 6595 GLADWELL D DIAMOND 621 CHAPMAN ALLIANCE 259M GLADWALL L LURA 7370
		DAM'S PROD
		BW WW WR YW YR SC AOD NR
		84 667 109 1097 113 39 11 111

Calving Ease Prospect who has a moderate birth weight and higher individual performance ratios. He is a product of 5197 who sires added base width and thickness within a forage-efficient frame. Lot 57 has a very nice EPD tabulation as well plus a heifer pregnancy EPD in the top 10% of the breed. His dam is a bigger framed cow but has a lot of capacity and productivity, as evident by her progeny record.



## SIGHT UNSEEN PURCHASE PLAN

Can't make it to the sale? We guarantee you won't be disappointed in a Chapman "Forage-Developed" bull that you buy "sight unseen". In fact, we sell many bulls every year this way. Our experience over the past 69 years is the sooner you contact us, the better we are able to match the right cattle to your specifications. When cattle purchased sight-unseen are delivered, the buyer has the right of refusal for any animal that is not as they were represented. Guarantee applies to cattle discussed with a Chapman Sale Professional prior to the sale.

**100% Satisfaction Guaranteed!**



MATERNAL BROTHER TO LOT 59



LOT	58	CHAPMAN TITANIUM 8545					
		TATOO SWC 8545F DOB: April 24 2018 REG#: 2127512					
SPRING '20		MC CUMBER TITANIUM 3127			SINCLAIR FORTUNATE SON		
BW	3.4	MC CUMBER TITANIUM 5197			MSS WIX 926 OF MC CUMBER		
WW	43	MISS WIX 062 OF MC CUMBER			SITZ RAINMAKER 6536		
YW	82				MISS WIX 6145 OF MC CUMBER		
M	27	CROWFOOT EQUATION 5793R			O C C LEGACY 839L		
TM	49	CHAPMAN K PRIDE 8067U			CROWFOOT FORKS 755K		
CE	1.0	CHAPMAN PRIDE 4409			CROWFOOT VENTURE 1698L		
MCE	4.0				CHAPMAN PRIDE 226M		
					DAM'S PROD		
BW	WW	WR	YW	YR	SC	AOD	NR
87	606	99	990	102	39	10	109

Lot 57, 58 and 59 is an opportunity to put together 3 look-alike paternal brothers. The dam of Lot 58 has a 364 day CI, and she is an Elite dam with the Association. In fact, the 1st four maternal granddams behind 8067U have a combined average progeny WR 10/108 with an average 372 day CI. Titanium in the top 1% of the breed for heifer pregnancy only bolsters an already productive maternal package.

LOT	59	CHAPMAN TITANIUM 8601					
		TATOO SWC 8601F DOB: May 01 2018		REG#: 2127524			
SPRING '20							
BW	1.0	MC CUMBER TITANIUM 3127				SINCLAIR FORTUNATE SON	
WW	38	MC CUMBER TITANIUM 5197				MSS WIX 926 OF MC CUMBER	
YW	68	MISS WIX 062 OF MC CUMBER				SITZ RAINMAKER 6536	
M	22					MISS WIX 6145 OF MC CUMBER	
TM	41	CHAPMAN LEGACY 026S				O C C LEGACY 839L	
CE	7.0	CHAPMAN PRIDE 834U				PAT LADY ERICA 8984	
MCE	7.0	CROWFOOT R G PRIDE 4410P				O C C MAGNUM 749M	
						CROWFOOT WJ 2514M	
		DAM'S PROD					
BW	WW	WR	YW	YR	SC	AOD	NR
77	629	102	999	103	38	10	102

**Calving Ease Prospect.** His sire has an average progeny birth weight of 84 and 80 lbs on male and female progeny respectively that I believe will work on heifers as well. Lot 59 has a sub-80 lb birth weight putting him well above average in the breed for BW, CE and MCE EPD's, yet he is above average in his performance ratios. Top 10% for HPG. His dam is typical of the Legacy daughters and hasn't missed.

LOT	60	CHAPMAN EQUIVALENCE 8650					
		TATOO SWC 8650F DOB: May 20 2018 REG#: 2127516					
SPRING '20		CROWFOOT EQUATION 5793R				O C C LEGACY 839L	
BW	0.8	XO CROWFOOT EQU 268Z				CROWFOOT FORKS 755K	
WW	38	XO CROWFOOT DIXIE ERICA 828U				CROWFOOT 6071S	
YW	68					CROWFOOT DIXIE ERICA 6422S	
M	24	CROWFOOT JOKER 6172S				O C C JOKER 620J	
TM	43	CHAPMAN K PRIDE 9075W				CFCC 1801L	
CE	7.0	CHAPMAN PRIDE 226M				RED OH BOOMER 552E	
MCE	7.0					KLUZAK PRIDE 25G	
		DAM'S PROD					
BW	WW	WR	YW	YR	SC	AOD	NR
77	597	97	995	102	37	9	105

**Calving Ease Prospect.** One of the younger bulls in the sale with four-star calving ease. You'll find the 268 sons to have a quiet disposition similar to the Bandits. In addition to the productive record of his dam, his maternal granddam and great granddam have a progeny WR of 11/109 and 10/106.





CHAPMAN EILEEN 216M - MATERNAL GRAND DAM TO LOT 61



LOT	61	CHAPMAN GOLDMERE 8520					
		TAT00 SWC 8520F DOB: April 19 2018 REG#: 2127553					
SPRING '20							
BW	2.7	COLE CREEK GOLDMERE 581	COLE CREEK GOLDMERE 70V				
WW	50	RICHMOND BANDIT SRD 67B	COLE CREEK JUANADA 92T				
YW	79	CROWFOOT KELTON 2015Z	CROWFOOT EQUATION 5793R				
M	29		CROWFOOT PATTI 7043T				
TM	54	CHAPMAN MEMENTO 0513X	SINCLAIR MEMENTO 8RL5				
CE	2.0	CHAPMAN EILEEN 5129C	CROWFOOT LOVEMERE PET 5791R				
MCE	7.0	CHAPMAN EILEEN 216M	CROWFOOT AMBUSH 9137J				
			GLADWALL GV EILEEN 6230				
		DAM'S PROD					
BW	WW	WR	YW	YR	SC	AOD	NR
83	719	117	1063	109	40	3	127

Calving Ease Prospect and an opportunity to start a bull roll on 3 more Bandit sons. Lot 61 has a solid individual record of birth to post-weaning gain. Lot 61's dam is compiling a strong proof of production, which around here is their proof of life. She has a 370 day CI. Her dam has a progeny WR 13/04 and is an Elite dam in the Association. Her MGD has a progeny WR 13/100 and was a donor as well.

LOT	62	CHAPMAN GOLDMERE 8590					
		TAT00 SWC 8590F DOB: April 29 2018 REG#: 2127471					
SPRING '20							
BW	3.3	COLE CREEK GOLDMERE 581	COLE CREEK GOLDMERE 70V				
WW	57	RICHMOND BANDIT SRD 67B	COLE CREEK JUANADA 92T				
YW	90	CROWFOOT KELTON 2015Z	CROWFOOT EQUATION 5793R				
M	23		CROWFOOT PATTI 7043T				
TM	52	SINCLAIR RITO 9R7	RITO REVOLVE 0R5				
CE	1.0	CHAPMAN BELEVATE 5028C	SINCLAIR K BTY 6PV5 25F3				
MCE	4.0	CROWFOOT BELEVATE 1070Y	CROWFOOT EQUATION 5793R				
			CROWFOOT BELEVATE 6258S				
		DAM'S PROD					
BW	WW	WR	YW	YR	SC	AOD	NR
85	683	111	1026	106	41	3	108

Another strong performing Bandit for cows or possibly larger heifers. He would be very comparable to Lot 61 for individual merit. We lost his dam and she was off to such a good start. She had a 380 day CI. Her dam is still around though and is a long-bodied, easy keeping cow from the Crowfoot Dispersal. An interesting catch is the Sinclair Rito 9R7 daughters are weaning some of the heaviest calves.



MCCUMBER 8R191 RITO 161 - MATERNAL GRADE SIRE OF LOT 63

LOT	63	CHAPMAN GOLDMERE 8554					
		TAT00 SWC 8554F DOB: April 25 2018 REG#: 2127540					
SPRING '20		COLE CREEK GOLDMERE 581		COLE CREEK GOLDMERE 70V			
BW	3.2	RICHMOND BANDIT SRD 67B	COLE CREEK JUANADA 92T		CROWFOOT EQUATION 5793R		
WW	44	CROWFOOT KELTON 2015Z	CROWFOOT PATTI 7043T				
YW	71						
M	25	MC CUMBER 8R101 RITO 161	SINCLAIR ENTREPRENEUR 8R101				
TM	47	CHAPMAN ZARA 5156C	B PRIDE 463 OF MC CUMBER				
CE	1.0	CHAPMAN KIWI ZARA 101Y	CHAPMAN RITO LEGACY 218U				
MCE	5.0		CHAPMAN KIWI 919W				
			DAM'S PROD				
BW	WW	WR	YW	YR	SC	AOD	NR
86	630	103	991	102	42	3	93

Modest birth weight in this Bandit son but he might be above the comfort level for most with an 86 lb BW to be called a heifer bull. I did try Bandit on heifers and the birth weight was in-line, but they were tight coming out. The cows behind Lot 63 are all the right type and his dam has calved in the first cycle each year. I'd call her early gestation based on her calving interval.





LOT	64	CHAPMAN RECURSE 8617					
		TAT00 SWC 8617F DOB: May 03 2018 REG#: 2127487					
SPRING '20							
BW	2.7	RITO 707 OF IDEAL 3407 7075				R R RITO 707	
WW	43	S A V RESOURCE 1441				IDEAL 3407 OF 1418 076	
YW	90	S A V BLACKCAP MAY 4136				S A V 8180 TRAVELER 004	
M	23					S A V MAY 2397	
TM	45	CROWFOOT EQUATION 5793R				O C C LEGACY 839L	
CE	3.0	CHAPMAN BLACKBIRD 917W				CROWFOOT FORKS 755K	
MCE	-1.0	CHAPMAN BLACKBIRD 319N				BASIN EXPEDITION K47	
						BEVALEN BLACKBIRD 7K	
						DAM'S PROD	
BW	WW	WR	YW	YR	SC	AOD	NR
84	580	94	1032	106	40	9	104

A lower birth weight Resource with heifer bull potential. He gained momentum in his post-weaning gain. His dam is a smaller made Equation daughter with an above average production record. Her dam has a progeny WR 13/105 and is an Elite dam in the Association. A large group of registered cows requires a lot of management, but one of the benefits is the validity of individual ratio comparisons improves.



LOT	65	CHAPMAN TITANIUM 8527					
		TAT00 SWC 8527F DOB: April 20 2018 REG#: 2127508					
SPRING '20		MC CUMBER TITANIUM 3127		SINCLAIR FORTUNATE SON			
BW	1.0	MC CUMBER TITANIUM 5197		MSS WIX 926 OF MC CUMBER			
WW	39	MISS WIX 062 OF MC CUMBER		SITZ RAINMAKER 6536			
YW	73			MISS WIX 6145 OF MC CUMBER			
M	25			LIONHEART OF WICKWIRE			
TM	45	S B R WATERTON 6148S		OCTORARO MISS WIX 803			
CE	5.0	CHAPMAN ROSE 802U		CROWFOOT VENTURE 1698L			
MCE	7.0	CHAPMAN ROSE 631S		CHAPMAN ROSE 429P			
				DAM'S PROD			
BW	WW	WR	YW	YR	SC	AOD	NR
83	573	93	966	99	40	10	107

Calving Ease Prospect ranking in the top 6% for the heifer pregnancy EPD. He is a maternal brother to a bull we used in 2019, who was Lot 01 in the 2019 sale. His mother has been very productive and fertile, and extra attentive at calving. I wouldn't trade that though for a cow that abandons a newborn. She is more comfortable in a group and imprints her calves that way. She has earned a progeny WR 8/107.

LOT	66	CHAPMAN CITATION 8615					
		TAT00 SWC 8615F DOB: May 03 2018 REG#: 2127547					
SPRING '20							
BW	0.8	S A V REGISTRY 2831					
WW	37	S A V SENSATION 5615					
YW	68	S A V BLACKCAP MAY 4136					
M	21						
TM	39	CROWFOOT MACHO 4549P					
CE	7.0	CHAPMAN K PRIDE 9022W					
MCE	6.0	CHAPMAN PRIDE 780T					
		RITO 707 OF IDEAL 3407 7075					
		S A V MADAME PRIDE 0075					
		S A V 8180 TRAVELER 004					
		S A V MAY 2397					
		O C C MAGNUM 749M					
		CROWFOOT BLACKBIRD 2537M					
		RED SSS JUSTICE 174R					
		CHAPMAN PRIDE 4409					
		DAM'S PROD					
BW	WW	WR	YW	YR	SC	AOD	NR
82	628	100	963	98	40	9	99

Calving Ease Prospect. Lot 66 is a bull that would be higher up the performance ladder but was weaned a month early and was ratioed separate. Nonetheless he is a good bull out of a cow that is just the right size who hasn't missed and holds a 376 day CI. She stems from the productive K Pride cow family where the next four maternal granddams have earned a combined average WR 10/106.

LOT	67	CHAPMAN TITANIUM 8524					
		TAT00 SWC 8524F DOB: April 20 2018 REG#: 2127462					
		SPRING '20		MC CUMBER TITANIUM 3127		SINCLAIR FORTUNATE SON	
		BW	0.7	MC CUMBER TITANIUM 5197	MSS WIX 926 OF MC CUMBER		
		WW	36	MISS WIX 062 OF MC CUMBER	SITZ RAINMAKER 6536		
		YW	68		MISS WIX 6145 OF MC CUMBER		
		M	22	O C C LEGACY 839L	O C C ECHELON 857E		
		TM	40	CHAPMAN EOLA 601S	O C C DIXIE ERICA 960E		
		CE	7.0	GLADWALL EOLA 8125	C A R HOSTAGE 575		
		MCE	5.0		GLADWALL EOLA 061		
		DAM'S PROD					
BW	WW	WR	YW	YR	SC	AOD	NR
78	606	99	990	102	42	12	94

Calving Ease Prospect. A thick made individual that blends lower birth weight with a proven maternal package. His dam emulates the OCC Legacy daughters in the longevity of her udder, her fertility and her body type. She is credited with producing the 2013 high \$ sale bull and several replacements. She has also calved 1st cycle every year. Titanium is also in the top 1% for Heifer Pregnancy EPD.



**LOT 68** **CHAPMAN 7579**  
TATOO SWC 7579E DOB: APRIL 22 2017 REG#: Unregistered

SPRING '20			
BW	-	-	-
WW	-	-	-
YW	-	-	-
M	-	CHAPMAN MEMENTO 0505X	SINCLAIR MEMENTO 8RL5
TM	-	CHAPMAN BLOSSOM 3071A	CROWFOOT REV ERICA 5752R
CE	-	CHAPMAN BLOSSOM 815U	SINCLAIR RITO LEGACY 3R9
MCE	-		BAR J P BLOSSOM 62K

DAM'S PROD							
BW	WW	WR	YW	YR	SC	AOD	NR
83	573	92	982	95	42	4	103

The next two lots are 3-year old bulls who each naturally bred 40 cows a piece in 2019. Lot 68 offers a low birth weight package and could still comfortably service open heifers. Note they were only pulled out of pasture in late November and true to our bulls, it didn't take much to sharpen them up. Lot 68 sells as an unregistered bull as the paternal DNA was inconclusive.



CHAPMAN MEMENTO 0511X - SIRE OF LOT 69

**LOT 69** **CHAPMAN MONUMENT 7693**  
TATOO SWC 7693E DOB: MAY 17 2017 REG#: 2068895

SPRING '20			
BW	0.5	SINCLAIR MEMENTO 8RL5	SINCLAIR RITO LEGACY 3R9
WW	28	CHAPMAN MEMENTO 0511X	SINCLAIR LADY 06S3 4465
YW	55	CROWFOOT REV ROSE 5900R	OCC MOONSHINE 740M
M	21		CROWFOOT CH REV ROSE 1627L
TM	35	SINCLAIR HYDRO 90K6	O C C KIDDO 832K
CE	7.5	CHAPMAN PRISCILLA 1014Y	SINCLAIR ERISKAY 4E8 2N1
MCE	6.0	CHAPMAN PRISCILLA 9021W	CROWFOOT MACHO 4549P
			RED CHAPMAN PRISCILLA 732T

DAM'S PROD							
BW	WW	WR	YW	YR	SC	AOD	NR
76	652	104	1003	97	41	6	97

He is a long-spined heifer bull who naturally bred 40 cows and heifers in 2019. No guesswork here as he will go straight to work and cover a lot of females. Lot 68 and 69 both rank in the top 15% of the breed for BW, CE and heifer pregnancy EPD's. These 3-year old bulls give a snap shot into how these bulls, when developed over time, will continue to change for the better from sale day and onward.

**LOT 70** **CHAPMAN EQUATE 8537**  
TATOO SWC 8537F DOB: APRIL 20 2018 REG#: 2129158

SPRING '20			
BW	0.5	CROWFOOT EQUATION 5793R	O C C LEGACY 839L
WW	29	XO CROWFOOT EQU 268Z	CROWFOOT FORKS 755K
YW	55	XO CROWFOOT DIXIE ERICA 828U	CROWFOOT 6071S
M	25		CROWFOOT DIXIE ERICA 6422S
TM	39	SINCLAIR IN TIME 9RT10	LEACHMAN RIGHT TIME
CE	6.5	CHAPMAN BLOSSOM 4031B	N BAR ENCHANTRESS 4908
MCE	8.0	CHAPMAN BLOSSOM 776T	D D A EMBLAZON 27C
			BAR J P BLOSSOM 5M

DAM'S PROD							
BW	WW	WR	YW	YR	SC	AOD	NR
84	598	97	946	97	38	4	99

Calving Ease Prospect. I would call this bull a 4-star calving ease prospect even with an actual birth weight of 84 lbs. Every sire in his pedigree offers a lower birth profile and his EPD profile supports that. His dam has a 368 day CI. Our cattle have to have bred in calving ease as each man here is responsible for feeding and calving 500 females.







GRP  
MATERNAL BROTHER TO LOT 71

**VISIT US ONLINE**

**www.chapmancattle.com**

for more sale information  
and to learn more about  
Chapman Cattle Company.

**LOT 71 CHAPMAN COALITION 8707**  
TATOO SWC 8707F DOB: May 15 2018 REG#: 2127549

SPRING '20	SITZ ALLIANCE 6595 <b>CHAPMAN COALITION 4557B</b> CROWFOOT LADY ERICA 3785N	SITZ TRAVELER 8180 SITZ BARBARAMERE JET 2698 O C C JOKER 620J PAT LADY ERICA 8984
BW	1.7	
WW	37	
YW	66	
M	23	
TM	42	SINCLAIR IN TIME 9RT10 <b>CHAPMAN PEARL 1063Y</b> CHAPMAN PEARL 8002U
CE	4.0	LEACHMAN RIGHT TIME N BAR ENCHANTRESS 4908 CROWFOOT JOKER 6172S CROWFOOT PEARL 1828L
MCE	9.0	

DAM'S PROD							
BW	WW	WR	YW	YR	SC	AOD	NR
83	605	99	1007	104	38	7	95

Calving Ease Prospect. One of the youngest bulls in the sale that combines lower birth with solid post-weaning gain. He ranks in the top 10% of the breed for heifer pregnancy EPD. His 6-year old sire has excellent foot shape. Double-bred Joker who ranks in the top 1% of the breed for HP as well.

**LOT 72 CHAPMAN EQUATE 8548**  
TATOO SWC 8548F DOB: APRIL 25 2018 REG#: 2129164

SPRING '20	CROWFOOT EQUATION 5793R <b>CHAPMAN EQUATION 4547B</b> CROWFOOT REV ROSE 5900R	O C C LEGACY 839L CROWFOOT FORKS 755K O C C MOONSHINE 740M CROWFOOT CH REV ROSE 1627L
BW	1.1	
WW	41	
YW	65	
M	22	COLE CREEK GOLDMERE 581 <b>CHAPMAN 6 EILEEN 4036B</b> CHAPMAN EILEEN 2004Z
TM	42	COLE CREEK GOLDMERE 70V COLE CREEK JUANADA 92T SINCLAIR RITO 9R7 CHAPMAN EILEEN 709T
CE	6.5	
MCE	6.0	

DAM'S PROD							
BW	WW	WR	YW	YR	SC	AOD	NR
83	585	95	974	100	37	4	94

Calving Ease Prospect. Our bulls selected for heifers will provide more years on the same investment as they won't get too big too soon. Lot 72 ranks in the top 25% of the breed for BW and CE EPD's respectively and his dam hasn't missed, holding a 374 day CI, and stems from a long line of fertile cows

**LOT 73 CHAPMAN TITANIUM 8639**  
TATOO SWC 8639F DOB: May 06 2018 REG#: 2127503

SPRING '20	MC CUMBER TITANIUM 3127 <b>MC CUMBER TITANIUM 5197</b> MISS WIX 062 OF MC CUMBER	SINCLAIR FORTUNATE SON MSS WIX 926 OF MC CUMBER SITZ RAINMAKER 6536 MISS WIX 6145 OF MC CUMBER
BW	1.1	
WW	44	
YW	83	
M	21	O C C MOONSHINE 740M <b>CHAPMAN JEANNE 8080U</b> CHAPMAN JEANNE 4402
TM	43	O C C JUST RIGHT 619J O C C DIXIE ERICA 816B CROWFOOT BRUNO 1670L GLADWALL JEANNE T 2114
CE	5.0	
MCE	5.0	

DAM'S PROD							
BW	WW	WR	YW	YR	SC	AOD	NR
85	656	107	1054	108	-	10	108

Calving Ease Prospect who offers Titanium fertility with a modest birth weight and strong individual weaning and post-weaning ratios. The OCC Moonshine dams sure have a lot of longevity and Lot 73's dam hasn't missed, earning a progeny WR 8/108 while her dam gathered a WR 8/105.



OCC MOONSHINE 740M - MATERNAL GRAND SIRE OF LOT 73





CROWFOOT LADY ERICA 3785N - PGD OF LOT 74

LOT	74	CHAPMAN COALITION 8576					
		TAT00 SWC 8576F DOB: April 27 2018 REG#: 2127476					
SPRING '20							
BW	2.6	SITZ ALLIANCE 6595	SITZ TRAVELER 8180				
WW	45	CHAPMAN COALITION 4557B	SITZ BARBARAMERE JET 2698				
YW	74	CROWFOOT LADY ERICA 3785N	O C C JOKER 620J				
M	23		PAT LADY ERICA 8984				
TM	46	CHAPMAN WATERTON 018U	S B R WATERTON 6148S				
CE	2.0	CHAPMAN CHLOE 1007Y	CHAPMAN ROSE 610S				
MCE	8.0	CHAPMAN CHLOE 9001W	CROWFOOT 2711M				
			CROWFOOT CHLOE 5879R				
		DAM'S PROD					
BW	WW	WR	YW	YR	SC	AOD	NR
87	638	104	1027	106	40	7	97

Lots of maternal goodness in this bull. He performed well with individual weaning and yearling ratios well above average. Keep in mind these bulls have not seen a supplement until 18 months of age—we've sold enough of them to know they're going to get better with age. Dam has a 368 day CI and all 3 maternal dams of Lot 74 are still in production, right back to old 5879 who will have her 13th calf in 2020.



COLE CREEK CEDAR RIDGE 1V - GRANDSIRE OF LOT 75

LOT	75	CHAPMAN EQUATE 8534					
		TAT00 SWC 8534F DOB: APRIL 20 2018 REG#: 2129108					
SPRING '20		CROWFOOT EQUATION 5793R		O C C LEGACY 839L			
BW	0.3	XO CROWFOOT EQU 268Z		CROWFOOT FORKS 755K			
WW	34	XO CROWFOOT DIXIE ERICA 828U		CROWFOOT 6071S			
YW	65			CROWFOOT DIXIE ERICA 6422S			
M	27	COLE CREEK CEDAR RIDGE 181		COLE CREEK CEDAR RIDGE 1V			
TM	44	CHAPMAN ROSE 4024B		COLE CREEK JUANADA CAP 42P			
CE	8.0	CHAPMAN ROSE 681S		CHAPMAN ALLIANCE 262M			
MCE	7.0			CHAPMAN ROSE 208M			
				DAM'S PROD			
BW	WW	WR	YW	YR	SC	AOD	NR
72	556	91	922	95	37	4	104

Calving Ease Prospect. Lot 75 qualifies as a true heifer bull. His EPD profile reinforces his individual weight as he ranks in the top 15% for BW and CE EPD's. His sire was used successfully on heifers and his dam holds a 356 day CI indicating early gestation.



MATERNAL BROTHER TO LOT 76

LOT	76	CHAPMAN MEMENTO 8631					
	TAT00 SWC 8631F DOB: May 04 2018 REG#: 2127507						
	SPRING '20						
	BW	1.0	SINCLAIR MEMENTO 8RL5				
	WW	33	CHAPMAN MEMENTO 0505X				
	YW	54	CROWFOOT REV ERICA 5752R				
	M	26	CHAPMAN RITO LEGACY 218U				
	TM	43	CHAPMAN EILEEN 2036Z				
	CE	5.0	CHAPMAN EILEEN 006X				
	MCE	5.0	SINCLAIR RITO LEGACY 3R9				
		SINCLAIR LADY 06S3 4465					
		O C C JOKER 620J					
		CROWFOOT ERICA 3906N					
		SINCLAIR RITO LEGACY 3R9					
		PAT LADY ERICA 8984					
		V D A R RITO 953					
		CHAPMAN EILEEN 791T					
DAM'S PROD							
BW	WW	WR	YW	YR	SC	AOD	NR
83	643	105	987	102	38	6	101

Lot 76 is a source of lower birth weight genetics while earning weaning and yearling ratios above average. His dam has a 364 day CI and is a personal favorite. There have been 780 Memento progeny born out of the original sires. They have graded in forage-finished beef programs, won classes at Agribition, topped bull sales, and most importantly, been a source of profit-oriented females.





CHAPMAN LEGACY 026S - MATERNAL GRAND SIRE OF LOT 77



LOT 78 - DOUBLE BRED N BAR EMULATION EXT



CHAPMAN RITO LEGACY 218U - MATERNAL GRAND SIRE OF LOT 79

## LOT 77 CHAPMAN MEMENTO 8571

TAT00 SWC 8571F DOB: April 23 2018 REG#: 2127489

SPRING '20							
BW	1.8	SINCLAIR MEMENTO 8RL5			SINCLAIR RITO LEGACY 3R9		
WW	29	CHAPMAN MEMENTO 0505X			SINCLAIR LADY 06S3 4465		
YW	45	CROWFOOT REV ERICA 5752R			O C C JOKER 620J		
M	21				CROWFOOT ERICA 3906N		
TM	36	CHAPMAN LEGACY 026S			O C C LEGACY 839L		
CE	5.0	CHAPMAN ROSE 2089Z			PAT LADY ERICA 8984		
MCE	7.0	CHAPMAN ROSE 728T			CROWFOOT MACHO 4549P		
					CHAPMAN ROSE 317N		
		DAM'S PROD					
BW	WW	WR	YW	YR	SC	AOD	NR
85	598	97	923	95	41	6	100

Memento 0505X has averaged 84 lbs and 79 lbs on make and female progeny respectively. Lot 77 mirrors the male average with an 85 lb actual birth weight, and his pedigree favors calving ease over performance. His dam is a long-bodied cow with a good udder and a CI of 364 days.

## LOT 78 CHAPMAN TITANIUM 8660

TAT00 SWC 8660F DOB: May 14 2018 REG#: 2127552

SPRING '20		MC CUMBER TITANIUM 3127		SINCLAIR FORTUNATE SON			
BW	1.3	MC CUMBER TITANIUM 5197		MSS WIX 926 OF MC CUMBER			
WW	44	MISS WIX 062 OF MC CUMBER		SITZ RAINMAKER 6536			
YW	81			MISS WIX 6145 OF MC CUMBER			
M	24	SINCLAIR EXTRA 4X13		N BAR EMULATION EXT			
TM	46	CHAPMAN ELEVATE 819U		N BAR LADY IDA S C C 2P37			
CE	6.0	CHAPMAN ELEVATE 325N		CROWFOOT BRUNO 1670L			
MCE	7.0			GLADWALL ELEVATE 1101			
		DAM'S PROD					
BW	WW	WR	YW	YR	SC	AOD	NR
80	615	100	1040	107	39	10	103

Calving Ease Prospect. Strong post-weaning gain with a heifer pregnancy EPD in the top 2% of the breed. His pedigree lines up Emulation EXT ensuring fertility, longevity and long-lasting udders. Dam is a favorite and typical of the 4X13 daughters. Her dam is an Elite dam in the Association.

## LOT 79 CHAPMAN COALITION 8647

TAT00 SWC 8647F DOB: May 12 2018 REG#: 2127473

SPRING '20							
BW	1.3	SITZ ALLIANCE 6595				SITZ TRAVELER 8180	
WW	44	CHAPMAN COALITION 4557B				SITZ BARBARAMERE JET 2698	
YW	71	CROWFOOT LADY ERICA 3785N				O C C JOKER 620J	
M	26	CHAPMAN RITO LEGACY 218U				PAT LADY ERICA 8984	
TM	48	CHAPMAN KIWI ZARA 101Y				SINCLAIR RITO LEGACY 3R9	
CE	5.0	CHAPMAN KIWI 919W				PAT LADY ERICA 8984	
MCE	9.0					CROWFOOT MACHO 4549P	
						CHAPMAN KIWI 661S	
		DAM'S PROD					
BW	WW	WR	YW	YR	SC	AOD	NR
78	692	113	1053	108	37	7	110

Calving Ease Prospect. Low birth weight individual with strong individual performance. His dam has an impressive production record and Lot 79's pedigree lines up the Lady Erica 8984 donor top and bottom.





A CHLOE FROM THE SAME COW FAMILY AS LOT 80

## LOT 80 **CHAPMAN ROBUST 8626**

TAT00 SWC 8626F DOB: May 04 2018 REG#: 2127493

SPRING '20							
BW	0.9	BC SURVEYOR 680D			BC EAGLE EYE 110-7		
WW	48	BC ROBUST 0807			BC 2266 PRIDES LASS 4132 680		
YW	75	BC 327-8 CP BELLE 0-807			BC PURE PRIDE 327-8		
M	14				BC 607 CP BELLE MF 807		
TM	38	MC CUMBER 8R101 RITO 161			SINCLAIR ENTREPRENEUR 8R101		
CE	6.0	CHAPMAN CHLOE 3116A			B PRIDE 463 OF MC CUMBER		
MCE	1.0	CHAPMAN CHLOE 428P			LEACHMAN RIGHT TIME		
					GLADWALL B CHLOE 623		
					DAM'S PROD		
BW	WW	WR	YW	YR	SC	AOD	NR
83	601	98	972	100	Out of Sale	5	97

Calving Ease Prospect that is clean in his lines. His dam has calved in the first cycle every year and has a 378 day CI - rebred to Robust again in 2020. She stems from the productive Chloe cow family that has been responsible for several herd bulls. Her mother just weaned her 13th calf last fall.



PATERNAL GRAND SIRE

## LOT 81 **CHAPMAN ROBUST 8559**

TAT00 SWC 8559F DOB: April 25 2018 REG#: 2127506

SPRING '20							
BW	2.2	BC SURVEYOR 680D				BC EAGLE EYE 110-7	
WW	46	BC ROBUST 0807				BC 2266 PRIDES LASS 4132 680	
YW	65	BC 327-8 CP BELLE 0-807				BC PURE PRIDE 327-8	
M	19					BC 607 CP BELLE MF 807	
TM	42	CROWFOOT JOKER 6172S				O C C JOKER 620J	
CE	3.0	CHAPMAN PRIDE 3081A				CFCC 1801L	
MCE	1.0	CHAPMAN PRIDE 775T				CHAPMAN ALLIANCE 259M	
						KLUZAK PRIDE 25G	
DAM'S PROD							
BW	WW	WR	YW	YR	SC	AOD	NR
86	643	105	915	94	36	5	106

Offering a fresh pedigree, Lot 81 posts an above average weaning ratio and stems from the productive K Pride cow family. His dam calved in the first cycle in 2019 and is rebred to Robust for 2020. Her calving interval is 363 days. Her dam has earned a progeny WR 9/102 and her MGD has a progeny WR 10/106.



## LOT 82 **CHAPMAN ROBUST 8630**

TAT00 SWC 8630F DOB: May 04 2018 REG#: 2127488

SPRING '20							
BW	1.2	BC SURVEYOR 680D				BC EAGLE EYE 110-7	
WW	44	BC ROBUST 0807				BC 2266 PRIDES LASS 4132 680	
YW	63	BC 327-8 CP BELLE 0-807				BC PURE PRIDE 327-8	
M	18					BC 607 CP BELLE MF 807	
TM	40	CHAPMAN MEMENTO 0505X				SINCLAIR MEMENTO 8RL5	
CE	6.0	CHAPMAN CHLOE 3087A				CROWFOOT REV ERICA 5752R	
MCE	1.0	CHAPMAN CHLOE 8044U				CROWFOOT EQUATION 5793R	
						GLADWALL B CHLOE 623	
						DAM'S PROD	
BW	WW	WR	YW	YR	SC	AOD	NR
85	655	107	958	99	38	5	101

Calving Ease Prospect. Lot 82 is similar to Lot 80 as he is a Robust out of a Chloe daughter. He posts a moderate birth weight along with a weaning ratio of 107. One of the younger bulls in the sale. His dam maintains a 368 day CI and is above average in her nursing ratio.



**LOT 83 CHAPMAN ROBUST 8581**

TAT00 SWC 8581F DOB: April 27 2018 REG#: 2127486

SPRING '20		BC SURVEYOR 680D	BC EAGLE EYE 110-7
BW	1.0	BC ROBUST 0807	BC 2266 PRIDES LASS 4132 680
WW	59	BC 327-8 CP BELLE 0-807	BC PURE PRIDE 327-8
YW	92		BC 607 CP BELLE MF 807
M	46	SINCLAIR RITO 9R7	RITO REVOLVE 0R5
TM	7.0	CHAPMAN PRINCESS 3004A	SINCLAIR K BTY 6PV5 25F3
CE	1.0	CHAPMAN PRINCESS 9026W	CROWFOOT JOKER 6172S
MCE			CHAPMAN PRINCESS 619S

## DAM'S PROD

BW	WW	WR	YW	YR	SC	AOD	NR
77	686	112	1043	107	41	5	103

Calving Ease Prospect. Thick made bull that hit the mark for individual performance relative to his pen mates. He does prefer to be with his buddies. His dam is building a nice proof being above average for her progeny weaning and yearling ratios and maintains a 370 day CI.



SINCLAIR MEMENTO 8RL5 - GRANDSIRE OF LOT 84


**If you raise animals that are:**

Grass Fed- never fed grain

Raised without added hormones or antibiotics

Free Range - never confined to a feedlot

We are looking for yearlings, fat cattle or cows.

Please call Calvin at 403-242-5530 or calvin@topgrass.ca

[www.topgrass.ca](http://www.topgrass.ca)

**LOT 84 CHAPMAN MEMENTO 8570**

TAT00 SWC 8570F DOB: April 23 2018 REG#: 2127464

SPRING '20		SINCLAIR MEMENTO 8RL5	SINCLAIR RITO LEGACY 3R9
BW	0.7	CHAPMAN MEMENTO 0505X	SINCLAIR LADY 06S3 4465
WW	41	CROWFOOT REV ERICA 5752R	O C C JOKER 620J
YW	58		CROWFOOT ERICA 3906N
M	21	SINCLAIR RITO 9R7	RITO REVOLVE 0R5
TM	42	CHAPMAN CHLOE 2062Z	SINCLAIR K BTY 6PV5 25F3
CE	8.0	CHAPMAN CHLOE 8017U	CROWFOOT MACHO 4549P
MCE	6.0		CHAPMAN CHLOE 617S

## DAM'S PROD

BW	WW	WR	YW	YR	SC	AOD	NR
84	638	104	909	94	37	6	98

Calving Ease Prospect. Last call on an original Memento. Modest birth weight with a WR of 104. His dam is easy keeping and has a 365 day CI. Lot 84 should breed a lot of females as his sire sure did.

**LOT 85 CHAPMAN KING TEN 8517**

TAT00 SWC 8517F DOB: April 18 2018 REG#: Unregistered

SPRING '20		CROWFOOT 9052W	CROWFOOT EQUATION 5793R
BW	-	CHAPMAN KING TEN 4522B	CROWFOOT KELTON 4790P
WW	-	C H BLACKBIRD 9717	J R SHARPSHOOTER
YW	-		C H BLACKBIRD 6604
M	-	RICHMOND BANDIT SRD 67B	COLE CREEK GOLDMERE 581
TM	-	CHAPMAN PEARL 6148D	CROWFOOT KELTON 2015Z
CE	-	CHAPMAN PEARL 1024Y	SINCLAIR IN TIME 9RT10
MCE	-		CHAPMAN PEARL 8061U

## DAM'S PROD

BW	WW	WR	YW	YR	SC	AOD	NR
72	621	106	1037	110	38	2	106

Calving Ease Prospect. Above average weaning and post-weaning performance with just a 72 lb birth weight. A heifers first calf. She really produced and was one of the 1st females to calve in 2018, but we lost her the following spring. She was from a productive cow family too, with the next 3 maternal dams earning a progeny WR of 6/106, 8/106 (Elite Association dam) and 9/101.





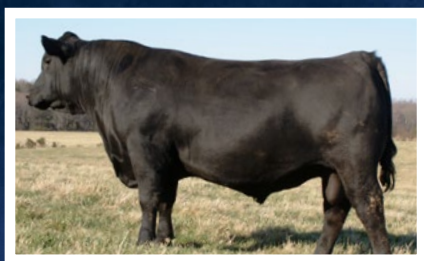
**BC ROBUST 0807**

BC Surveyor 680D x BC Pure Pride 327-8



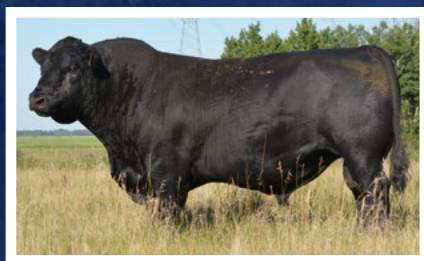
**McCUMBER TITANIUM 5197**

Mc Cumber Titanium 3127 x Sitz Rainmaker 6536



**WRA CEDAR RUN D2**

W R A Cedar Run A2 x W R A Aristocrat R4



**XO CROWFOOT EQU 268Z**

Crowfoot Equation 5793R x Crowfoot 6071S



**McCUMBER STEADFAST 809**

McCumber Steadfast 635 x S A V 8180 Traveler 004



**CHAPMAN MEMENTO 7542E**

Chapman Memento 0505X x SBR Waterton 6148



**McCUMBER 307 FORTUNATE 7141**

McCumber Fortunate 307 x OCC Tremendous 619T



**SITZ PAYWEIGHT 749E**

Basin Payweight 1682 x Connealy Thunder

**CHAPMAN EQUATION 4547B**  
Crowfoot Equation 5793R x OCC Moonshine 740M

**CHAPMAN KING TEN 4522B**  
Crowfoot 9052W x JR Sharpshooter

**COLEMAN FORTE 752**  
PAPA Forte 1921 x Connealy Onward

**CHAPMAN COALITION 4557B**  
Sitz Alliance 6595 x OCC Joker 620J

2019 RESIDENT HERDSIRES







BOX 728  
STETTLER, ALBERTA  
T0C 2L0



RETURN POSTAGE GUARANTEED  
PORT DE RETOUR GARANTI



14TH ANNUAL  
**FORAGE-DEVELOPED  
ANGUS BULL SALE**

ENGINEERED TO BREED MORE COWS & BUILT TO LAST

[WWW.CHAPMANCATTLE.COM](http://WWW.CHAPMANCATTLE.COM)

PRINTED IN CANADA / FOR FREE DISTRIBUTION

In order to save trees, please email us if you do not wish to receive a printed catalog or are no longer in the cattle business. Thank you.